

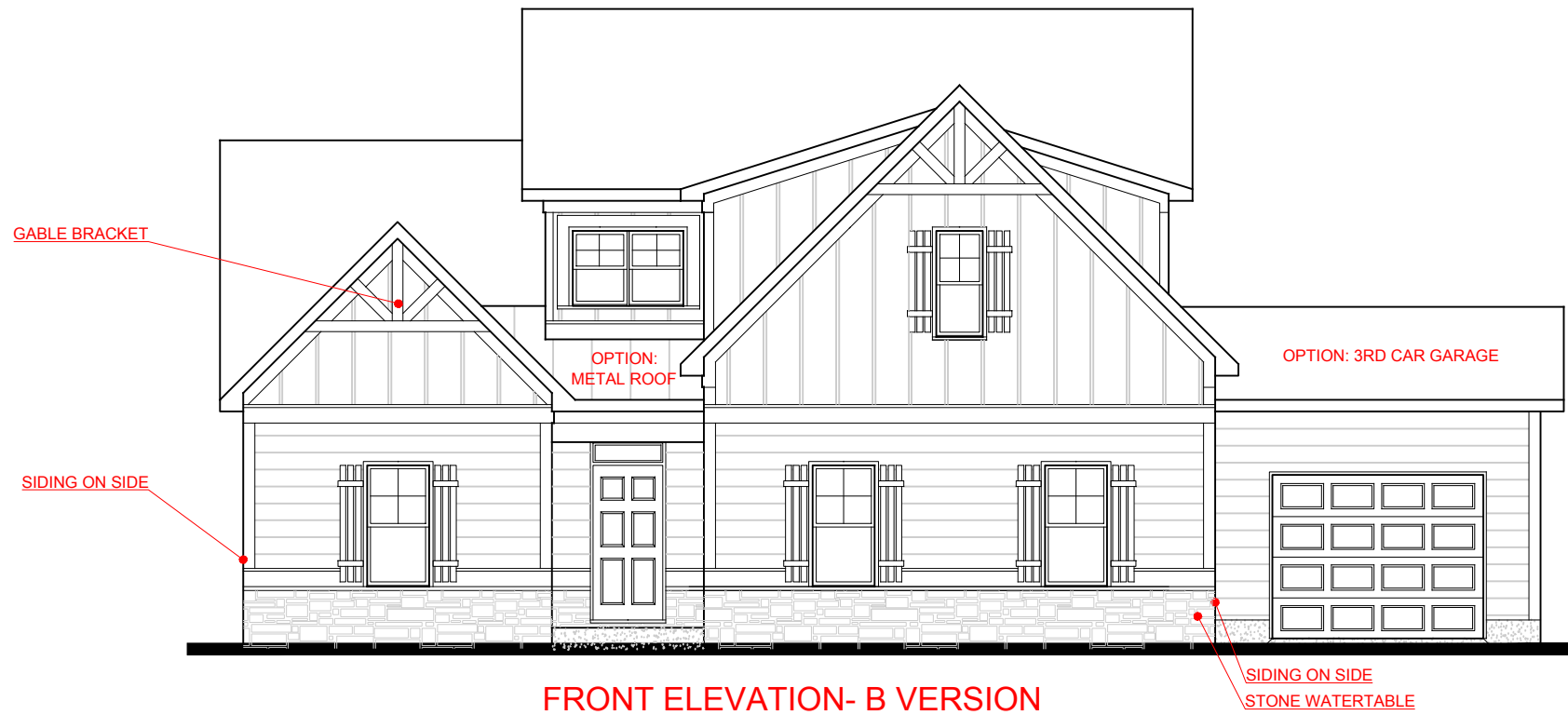
CARLTON

SIDE ENTRY VERSION



*THE DRAWING(S) ON THIS PAGE ARE A GRAPHICAL REPRESENTATION ONLY. PLEASE CONSULT YOUR AGENT FOR SPECIFIC INFORMATION REGARDING THIS FLOOR PLAN. THE DESIGN OF THE FLOOR PLAN REPRESENTED IS SUBJECT TO CHANGE WITHOUT NOTICE.

SQUARE FOOTAGE:	
FIRST FLOOR:	1,398
SECOND FLOOR:	1,167
TOTAL:	2,565



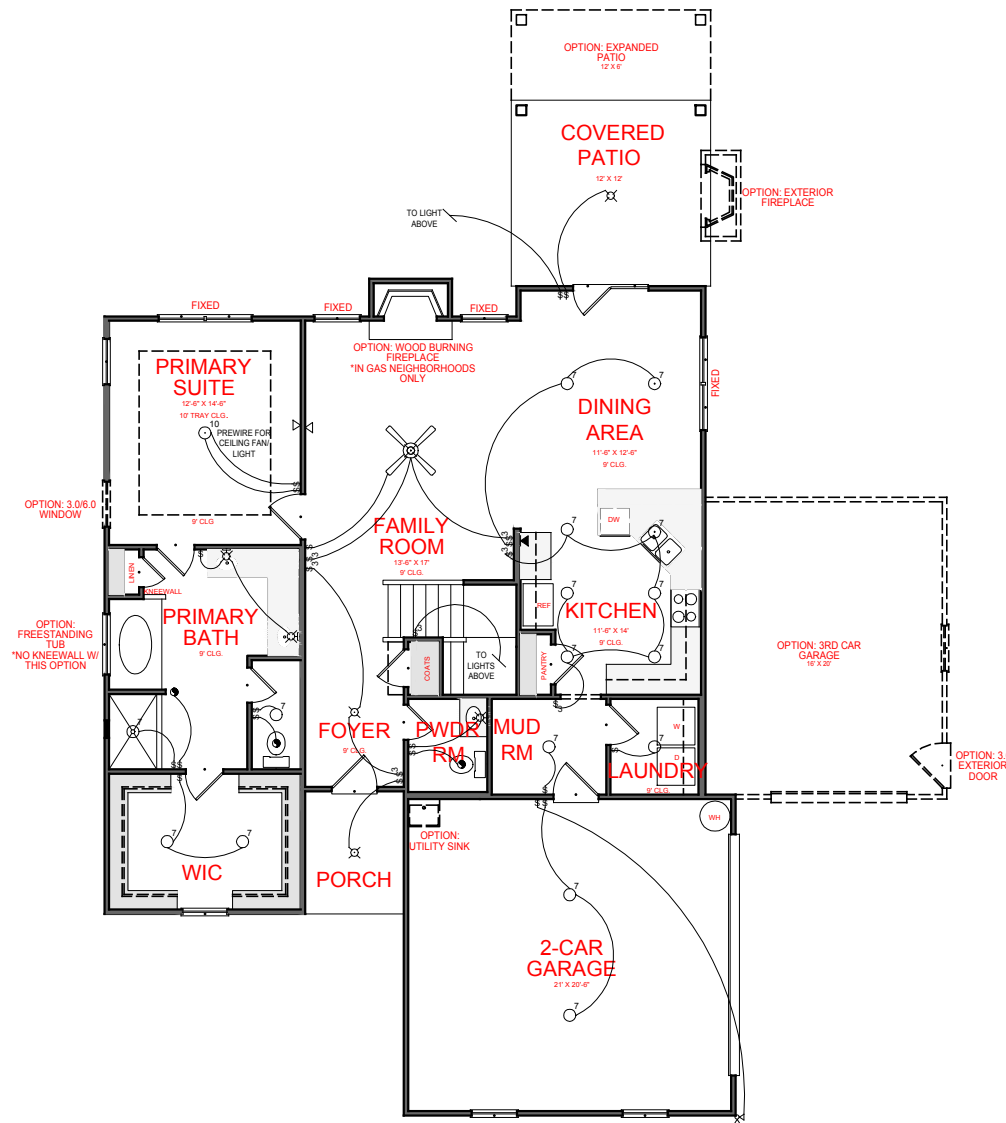
CARLTON

SIDE ENTRY VERSION



*THE DRAWING(S) ON THIS PAGE ARE A GRAPHICAL REPRESENTATION ONLY. PLEASE CONSULT YOUR AGENT FOR SPECIFIC INFORMATION REGARDING THIS FLOOR PLAN. THE DESIGN OF THE FLOOR PLAN REPRESENTED IS SUBJECT TO CHANGE WITHOUT NOTICE.

SQUARE FOOTAGE:	
FIRST FLOOR:	1,398
SECOND FLOOR:	1,167
TOTAL:	2,565



FIRST FLOOR PLAN

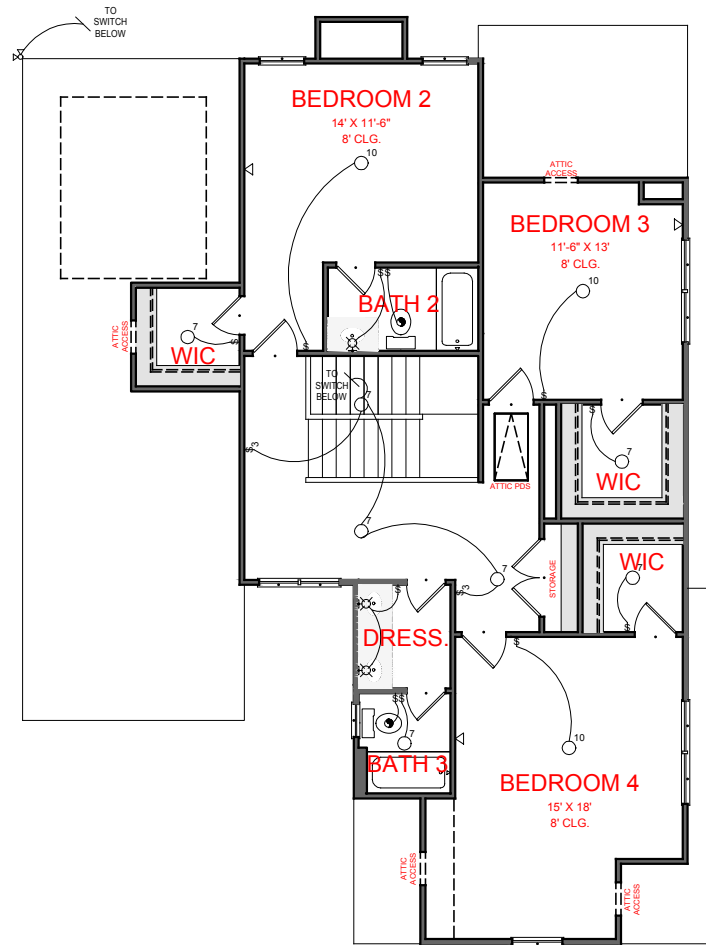
ELECTRICAL LEGEND	
	CEILING LIGHT FIXTURE
	WALL LIGHT FIXTURE
	7" LED DISK
	10" LED DISK
	CEILING FAN
	FLOOD LIGHT FIXTURE
	DUPLEX FLOOR OUTLET
	TELEPHONE
	NETWORK/CABLE
	SWITCH
	3-WAY SWITCH
	4-WAY SWITCH
	MOTION SENSOR SWITCH
	EXHAUST FAN
	EXHAUST FAN/LIGHT
	SCONCE LIGHT FIXTURE

CARLTON
SIDE ENTRY VERSION

JEFF LINDSEY COMMUNITIES
Live your dream.

SQUARE FOOTAGE:	
FIRST FLOOR:	1,398
SECOND FLOOR:	1,167
TOTAL:	2,565

*THE DRAWING(S) ON THIS PAGE ARE A GRAPHICAL REPRESENTATION ONLY. PLEASE CONSULT YOUR AGENT FOR SPECIFIC INFORMATION REGARDING THIS FLOOR PLAN. THE DESIGN OF THE FLOOR PLAN REPRESENTED IS SUBJECT TO CHANGE WITHOUT NOTICE.



SECOND FLOOR PLAN

ELECTRICAL LEGEND	
	CEILING LIGHT FIXTURE
	WALL LIGHT FIXTURE
	7" LED DISK
	10" LED DISK
	CEILING FAN
	FLOOD LIGHT FIXTURE
	DUPLEX FLOOR OUTLET
	TELEPHONE
	NETWORK/CABLE
	SWITCH
	3-WAY SWITCH
	4-WAY SWITCH
	MOTION SENSOR SWITCH
	EXHAUST FAN
	EXHAUST FAN/LIGHT
	SCONCE LIGHT FIXTURE

CARLTON
SIDE ENTRY VERSION

JEFF LINDSEY COMMUNITIES
Live your dream.

SQUARE FOOTAGE:	
FIRST FLOOR:	1,398
SECOND FLOOR:	1,167
TOTAL:	2,565

*THE DRAWING(S) ON THIS PAGE ARE A GRAPHICAL REPRESENTATION ONLY. PLEASE CONSULT YOUR AGENT FOR SPECIFIC INFORMATION REGARDING THIS FLOOR PLAN. THE DESIGN OF THE FLOOR PLAN REPRESENTED IS SUBJECT TO CHANGE WITHOUT NOTICE.