

FRONT ELEVATION - A VERSION

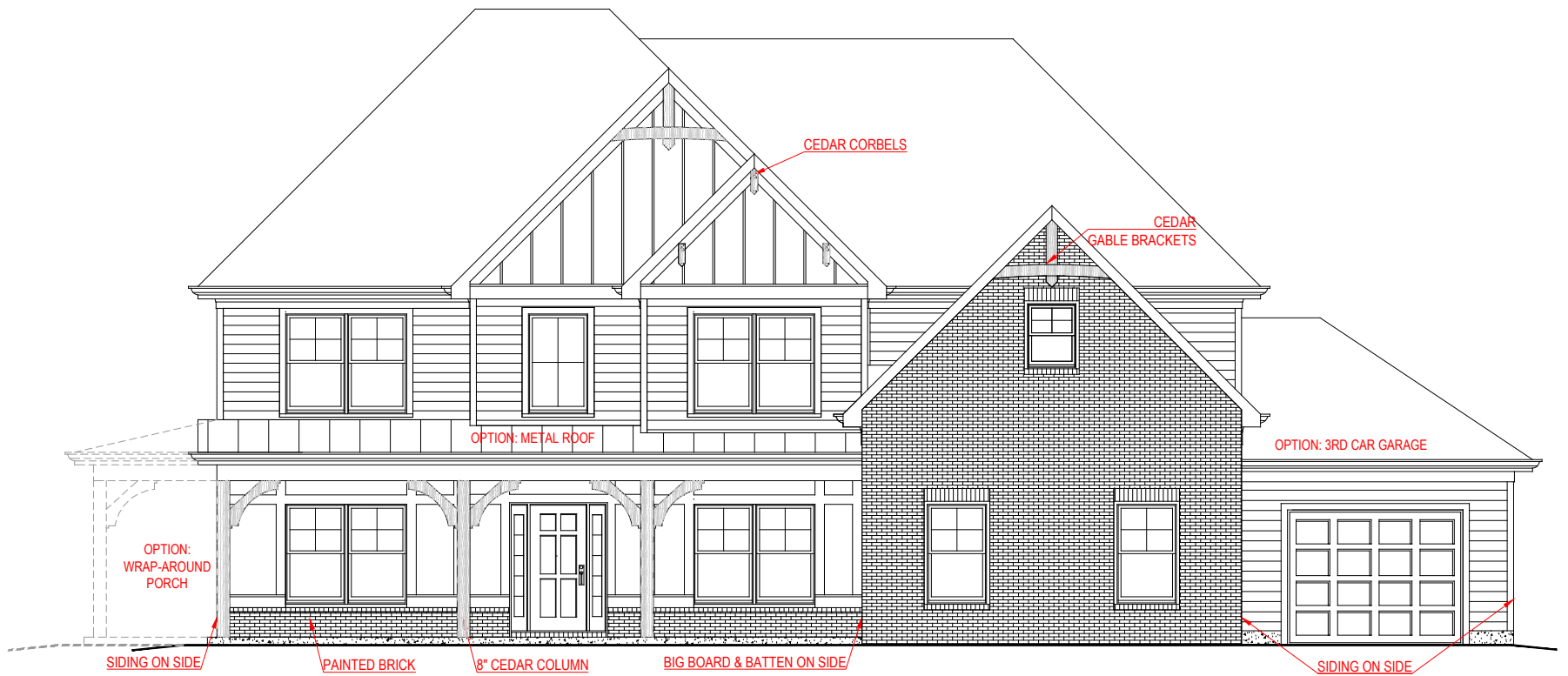
MILLWOOD

SIDE ENTRY VERSION



*THE DRAWING(S) ON THIS PAGE ARE A GRAPHICAL REPRESENTATION ONLY. PLEASE CONSULT YOUR AGENT FOR SPECIFIC INFORMATION REGARDING THIS FLOOR PLAN. THE DESIGN OF THE FLOOR PLAN REPRESENTED IS SUBJECT TO CHANGE WITHOUT NOTICE.

SQUARE FOOTAGE:
 FIRST FLOOR: 1,853 SQ. FT.
 SECOND FLOOR: 1,605 SQ. FT.
 TOTAL: 3,458 SQ. FT.



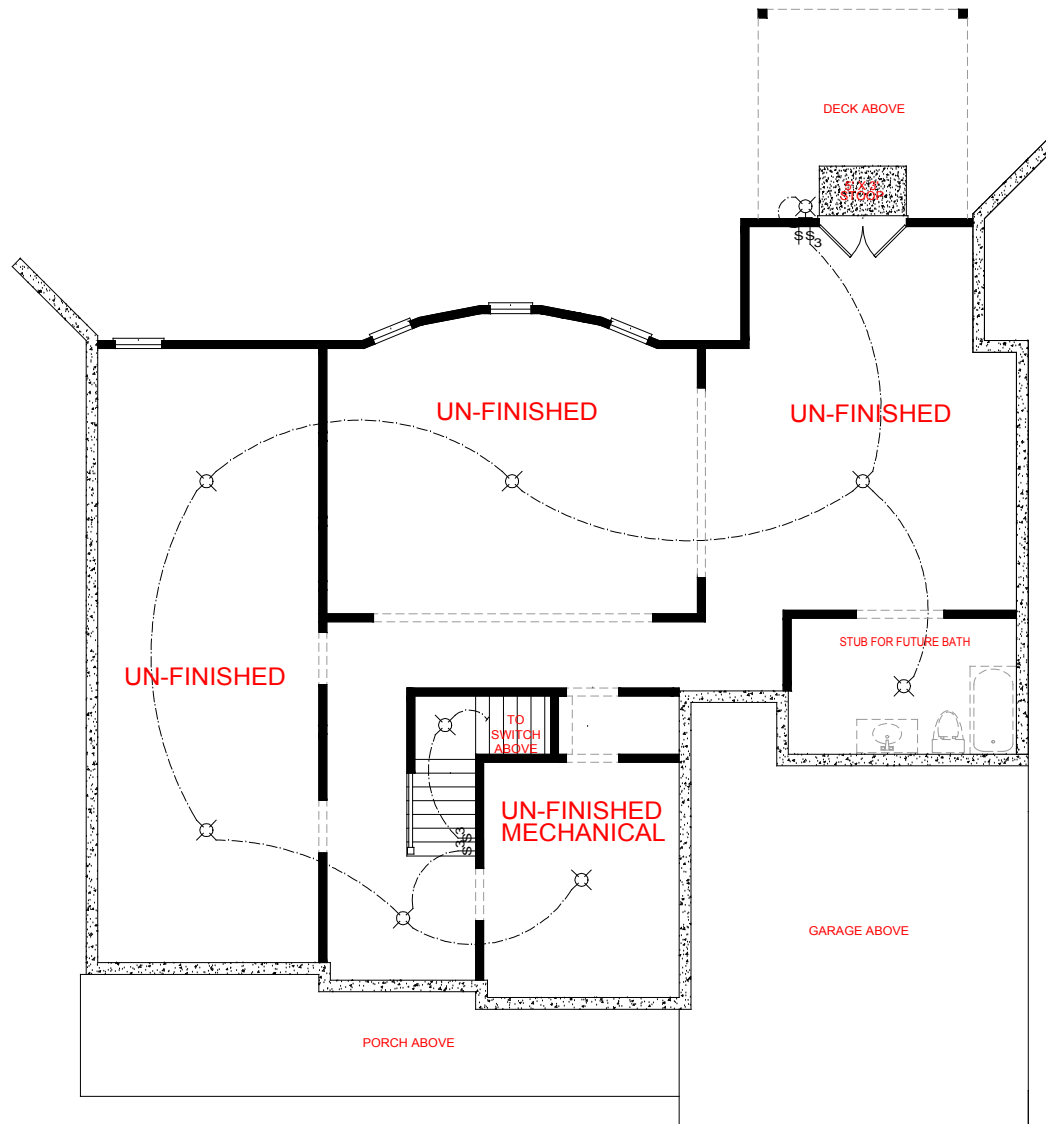
FRONT ELEVATION - F VERSION

MILLWOOD
SIDE ENTRY VERSION








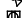


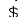
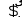
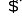



*THE DRAWING(S) ON THIS PAGE ARE A GRAPHICAL REPRESENTATION ONLY. PLEASE CONSULT YOUR AGENT FOR SPECIFIC INFORMATION REGARDING THIS FLOOR PLAN. THE DESIGN OF THE FLOOR PLAN REPRESENTED IS SUBJECT TO CHANGE WITHOUT NOTICE.

SQUARE FOOTAGE:	
FIRST FLOOR:	1,853 SQ. FT.
SECOND FLOOR:	1,605 SQ. FT.
TOTAL:	3,458 SQ. FT.



OPTION 1: UN-FINISHED BASEMENT

ELECTRICAL LEGEND

-  CEILING LIGHT FIXTURE
-  WALL LIGHT FIXTURE
-  7" LED DISK
-  10" LED DISK
-  FLOOD LIGHT FIXTURE
-  DUPLEX FLOOR OUTLET
-  TELEPHONE
-  TELEVISION
-  SWITCH
-  3-WAY SWITCH
-  MOTION SENSOR SWITCH
-  EXHAUST FAN
-  EXHAUST FAN/LIGHT
-  SCONCE LIGHT FIXTURE

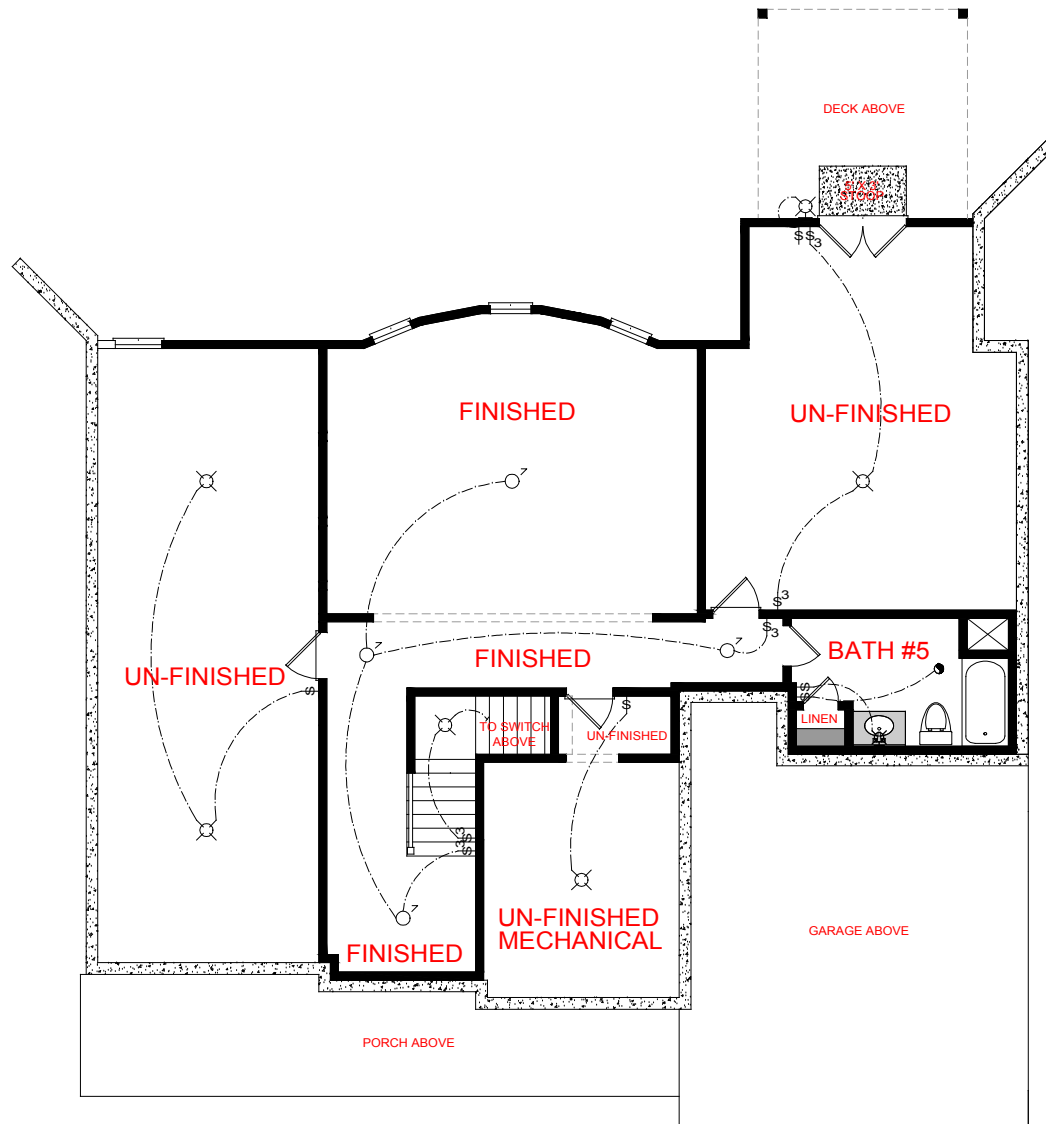
SQUARE FOOTAGE:

FIRST FLOOR: 1,853 SQ. FT.
 SECOND FLOOR: 1,605 SQ. FT.
TOTAL: 3,458 SQ. FT.

MILLWOOD
 SIDE ENTRY VERSION













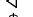
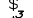

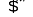
*THE DRAWING(S) ON THIS PAGE ARE A GRAPHICAL REPRESENTATION ONLY. PLEASE CONSULT YOUR AGENT FOR SPECIFIC INFORMATION REGARDING THIS FLOOR PLAN. THE DESIGN OF THE FLOOR PLAN REPRESENTED IS SUBJECT TO CHANGE WITHOUT NOTICE.



OPTION 2: PARTIALLY FINISHED BASEMENT

640 FINISHED SQ. FT.

ELECTRICAL LEGEND

-  CEILING LIGHT FIXTURE
-  WALL LIGHT FIXTURE
-  7" LED DISK
-  10" LED DISK
-  FLOOD LIGHT FIXTURE
-  DUPLEX FLOOR OUTLET
-  TELEPHONE
-  TELEVISION
-  SWITCH
-  3-WAY SWITCH
-  MOTION SENSOR SWITCH
-  EXHAUST FAN
-  EXHAUST FAN/LIGHT
-  SCONCE LIGHT FIXTURE

SQUARE FOOTAGE:

FIRST FLOOR: 1,853 SQ. FT.
SECOND FLOOR: 1,605 SQ. FT.

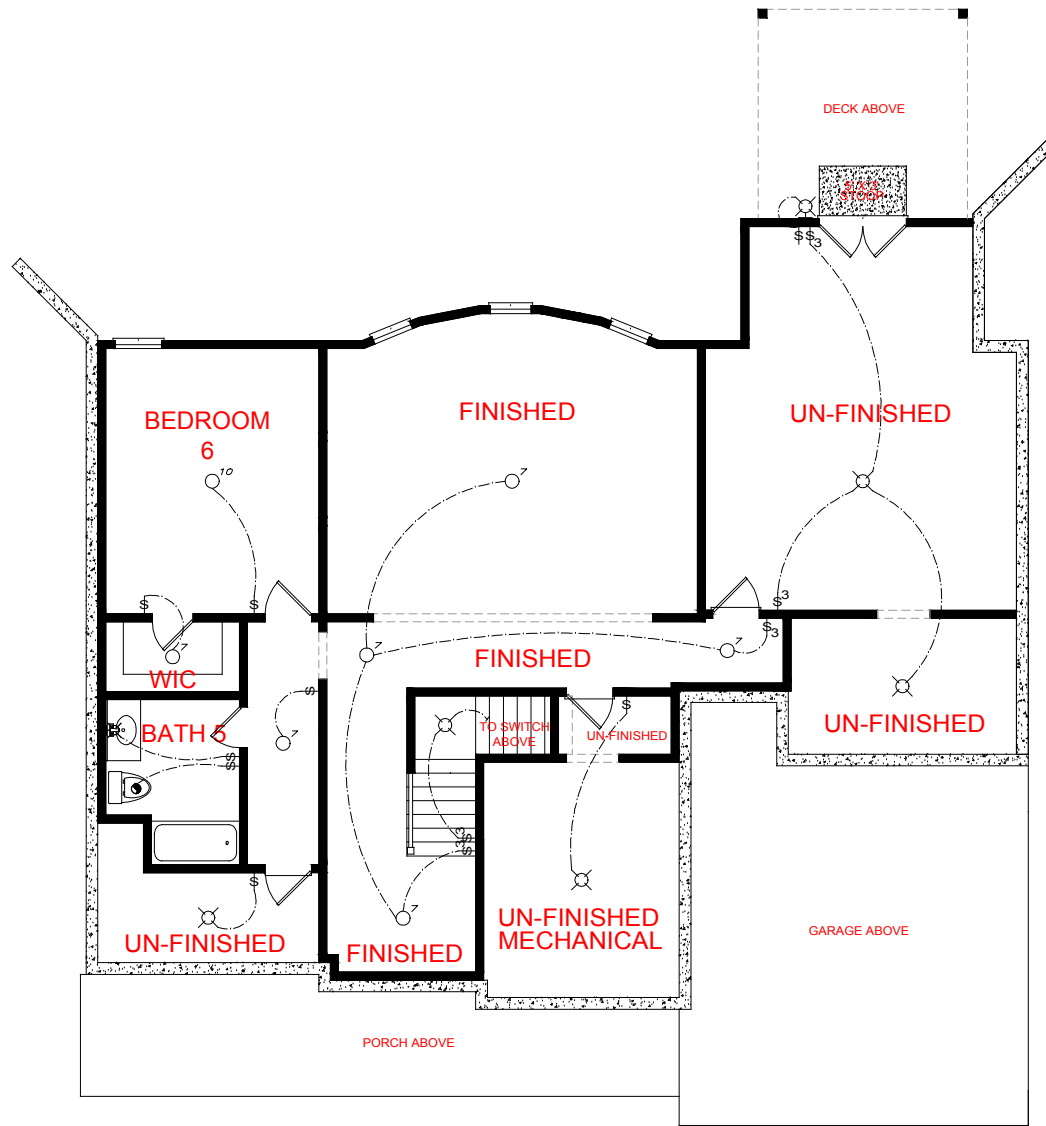
TOTAL: 3,458 SQ. FT.

MILLWOOD

SIDE ENTRY VERSION




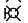

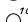
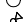



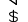
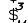
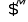



*THE DRAWING(S) ON THIS PAGE ARE A GRAPHICAL REPRESENTATION ONLY. PLEASE CONSULT YOUR AGENT FOR SPECIFIC INFORMATION REGARDING THIS FLOOR PLAN. THE DESIGN OF THE FLOOR PLAN REPRESENTED IS SUBJECT TO CHANGE WITHOUT NOTICE.



OPTION 3: PARTIALLY FINISHED BASEMENT W/ BEDROOM

977 FINISHED SQ. FT.

ELECTRICAL LEGEND

-  CEILING LIGHT FIXTURE
-  WALL LIGHT FIXTURE
-  7" LED DISK
-  10" LED DISK
-  FLOOD LIGHT FIXTURE
-  DUPLEX FLOOR OUTLET
-  TELEPHONE
-  TELEVISION
-  SWITCH
-  3-WAY SWITCH
-  MOTION SENSOR SWITCH
-  EXHAUST FAN
-  EXHAUST FAN/LIGHT
-  SCONCE LIGHT FIXTURE

SQUARE FOOTAGE:

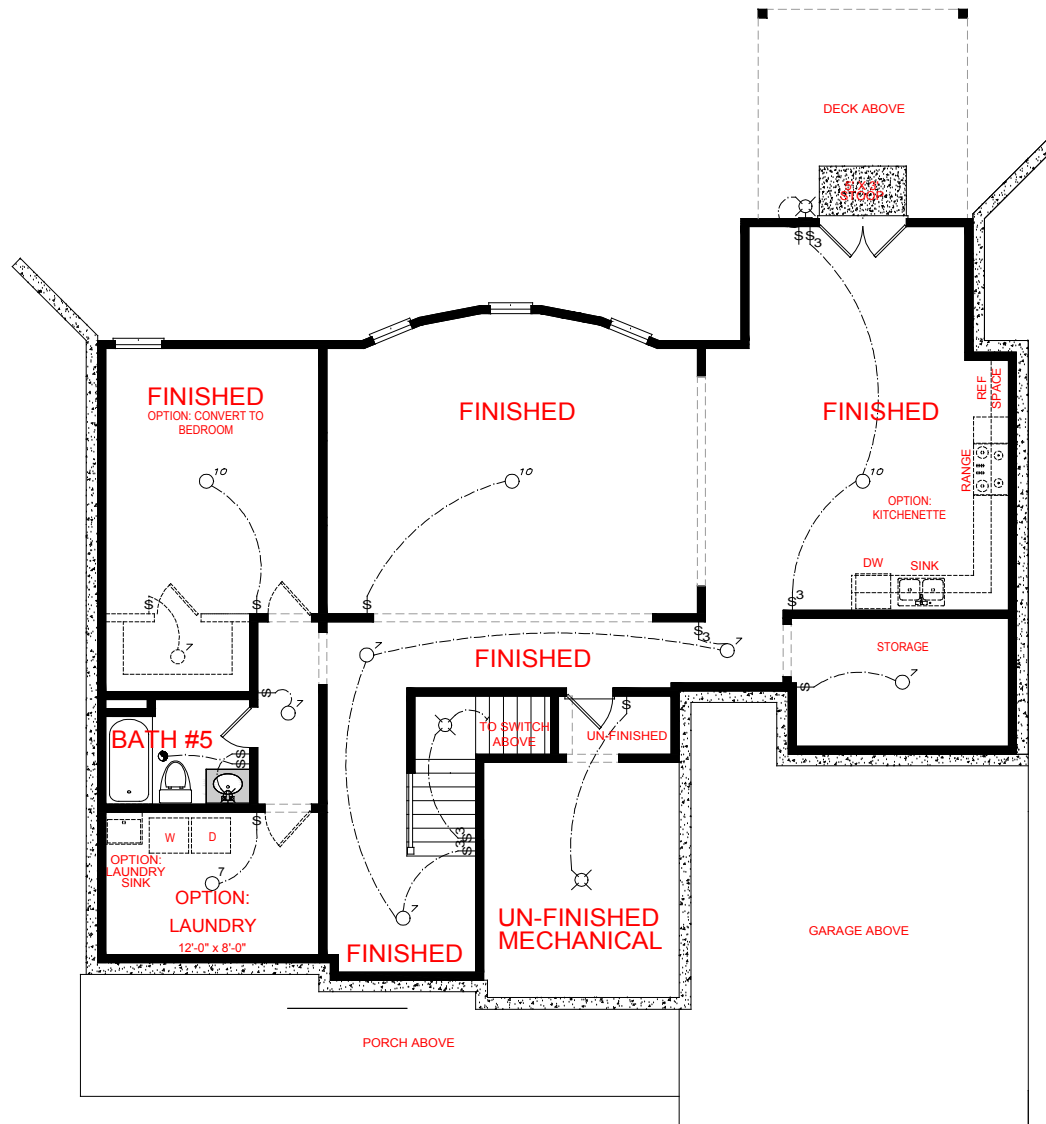
FIRST FLOOR:	1,853 SQ. FT.
SECOND FLOOR:	1,605 SQ. FT.
TOTAL:	3,458 SQ. FT.

MILLWOOD

SIDE ENTRY VERSION


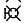

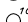
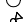



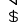
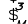
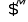





*THE DRAWING(S) ON THIS PAGE ARE A GRAPHICAL REPRESENTATION ONLY. PLEASE CONSULT YOUR AGENT FOR SPECIFIC INFORMATION REGARDING THIS FLOOR PLAN. THE DESIGN OF THE FLOOR PLAN REPRESENTED IS SUBJECT TO CHANGE WITHOUT NOTICE.



OPTION 4: FINISHED BASEMENT
1,535 FINISHED SQ. FT.

ELECTRICAL LEGEND

-  CEILING LIGHT FIXTURE
-  WALL LIGHT FIXTURE
-  7" LED DISK
-  10" LED DISK
-  FLOOD LIGHT FIXTURE
-  DUPLEX FLOOR OUTLET
-  TELEPHONE
-  TELEVISION
-  SWITCH
-  3-WAY SWITCH
-  MOTION SENSOR SWITCH
-  EXHAUST FAN
-  EXHAUST FAN/LIGHT
-  SCONCE LIGHT FIXTURE

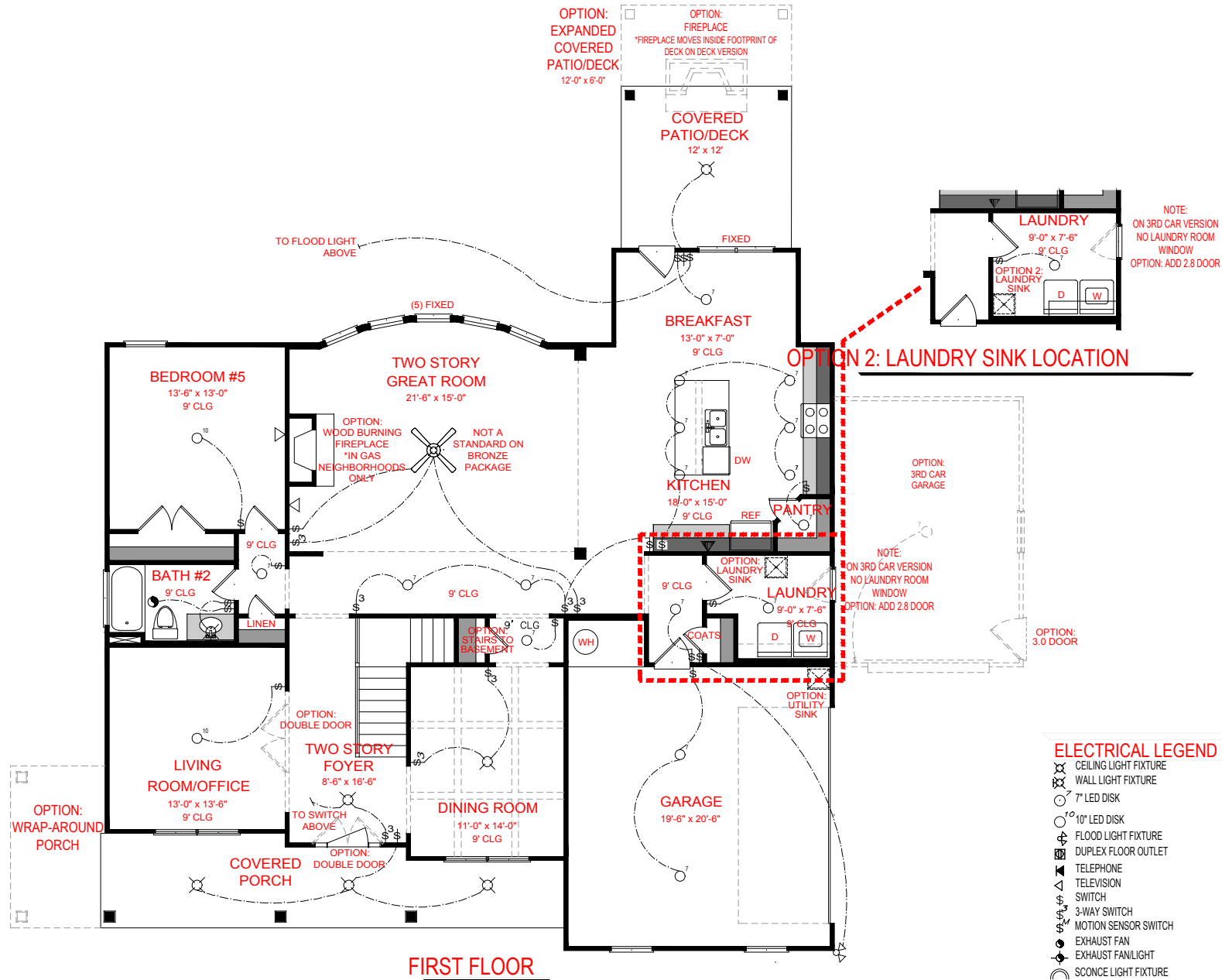
SQUARE FOOTAGE:

FIRST FLOOR:	1,853 SQ. FT.
SECOND FLOOR:	1,605 SQ. FT.
TOTAL:	3,458 SQ. FT.

MILLWOOD
SIDE ENTRY VERSION



*THE DRAWING(S) ON THIS PAGE ARE A GRAPHICAL REPRESENTATION ONLY. PLEASE CONSULT YOUR AGENT FOR SPECIFIC INFORMATION REGARDING THIS FLOOR PLAN. THE DESIGN OF THE FLOOR PLAN REPRESENTED IS SUBJECT TO CHANGE WITHOUT NOTICE.



FIRST FLOOR

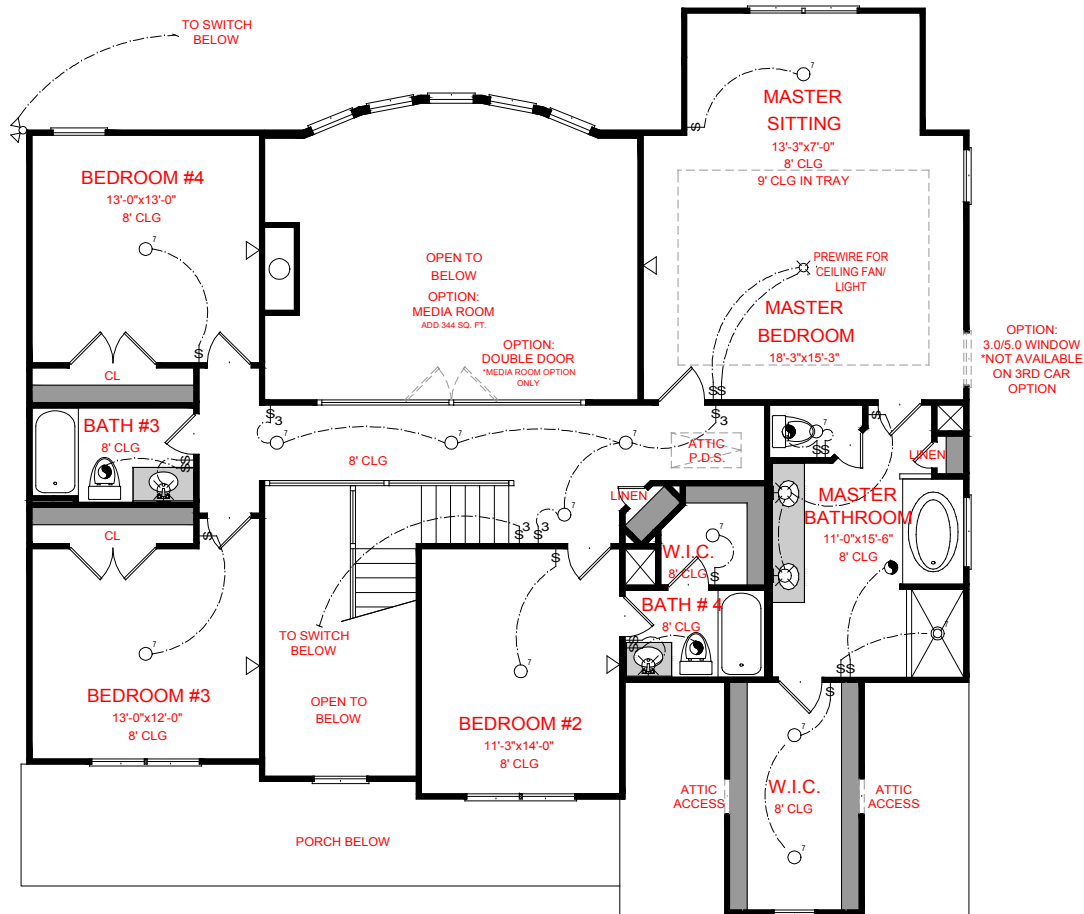
MILLWOOD
SIDE ENTRY VERSION



*THE DRAWING(S) ON THIS PAGE ARE A GRAPHICAL REPRESENTATION ONLY. PLEASE CONSULT YOUR AGENT FOR SPECIFIC INFORMATION REGARDING THIS FLOOR PLAN. THE DESIGN OF THE FLOOR PLAN REPRESENTED IS SUBJECT TO CHANGE WITHOUT NOTICE.

SQUARE FOOTAGE:

FIRST FLOOR:	1,853 SQ. FT.
SECOND FLOOR:	1,605 SQ. FT.
TOTAL:	3,458 SQ. FT.



SECOND FLOOR

- ELECTRICAL LEGEND**
- CEILING LIGHT FIXTURE
 - WALL LIGHT FIXTURE
 - 7" LED DISK
 - 10" LED DISK
 - FLOOD LIGHT FIXTURE
 - DUPLEX FLOOR OUTLET
 - TELEPHONE
 - TELEVISION
 - SWITCH
 - 3-WAY SWITCH
 - MOTION SENSOR SWITCH
 - EXHAUST FAN
 - EXHAUST FAN/LIGHT
 - SCONCE LIGHT FIXTURE

MILLWOOD
SIDE ENTRY VERSION



*THE DRAWING(S) ON THIS PAGE ARE A GRAPHICAL REPRESENTATION ONLY. PLEASE CONSULT YOUR AGENT FOR SPECIFIC INFORMATION REGARDING THIS FLOOR PLAN. THE DESIGN OF THE FLOOR PLAN REPRESENTED IS SUBJECT TO CHANGE WITHOUT NOTICE.

SQUARE FOOTAGE:

FIRST FLOOR:	1,853 SQ. FT.
SECOND FLOOR:	1,605 SQ. FT.
TOTAL:	3,458 SQ. FT.