



FRONT ELEVATION - A VERSION

SANTA FE
SIDE ENTRY VERSION



SQUARE FOOTAGE:	
FIRST FLOOR:	1,337
SECOND FLOOR:	795
TOTAL:	2,132

*THE DRAWING(S) ON THIS PAGE ARE A GRAPHICAL REPRESENTATION ONLY. PLEASE CONSULT YOUR AGENT FOR SPECIFIC INFORMATION REGARDING THIS FLOOR PLAN. THE DESIGN OF THE FLOOR PLAN REPRESENTED IS SUBJECT TO CHANGE WITHOUT NOTICE.



8" COLUMN
 SIDING ON SIDE
 FRONT ELEVATION - B VERSION

SANTA FE
 SIDE ENTRY VERSION



SQUARE FOOTAGE:

FIRST FLOOR:	1,337
SECOND FLOOR:	795
TOTAL:	2,132

*THE DRAWING(S) ON THIS PAGE ARE A GRAPHICAL REPRESENTATION ONLY. PLEASE CONSULT YOUR AGENT FOR SPECIFIC INFORMATION REGARDING THIS FLOOR PLAN. THE DESIGN OF THE FLOOR PLAN REPRESENTED IS SUBJECT TO CHANGE WITHOUT NOTICE.



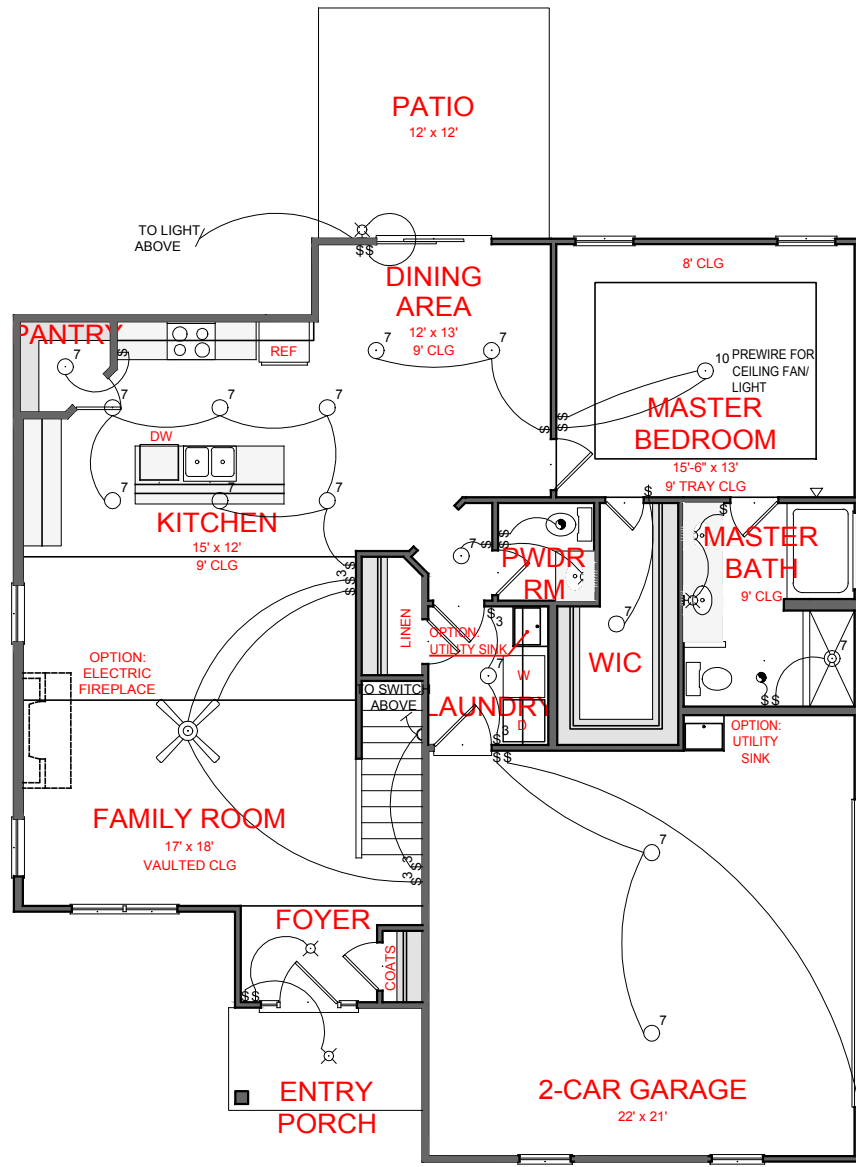
FRONT ELEVATION - D VERSION

SANTA FE
SIDE ENTRY VERSION



SQUARE FOOTAGE:	
FIRST FLOOR:	1,337
SECOND FLOOR:	795
TOTAL:	2,132

*THE DRAWING(S) ON THIS PAGE ARE A GRAPHICAL REPRESENTATION ONLY. PLEASE CONSULT YOUR AGENT FOR SPECIFIC INFORMATION REGARDING THIS FLOOR PLAN. THE DESIGN OF THE FLOOR PLAN REPRESENTED IS SUBJECT TO CHANGE WITHOUT NOTICE.



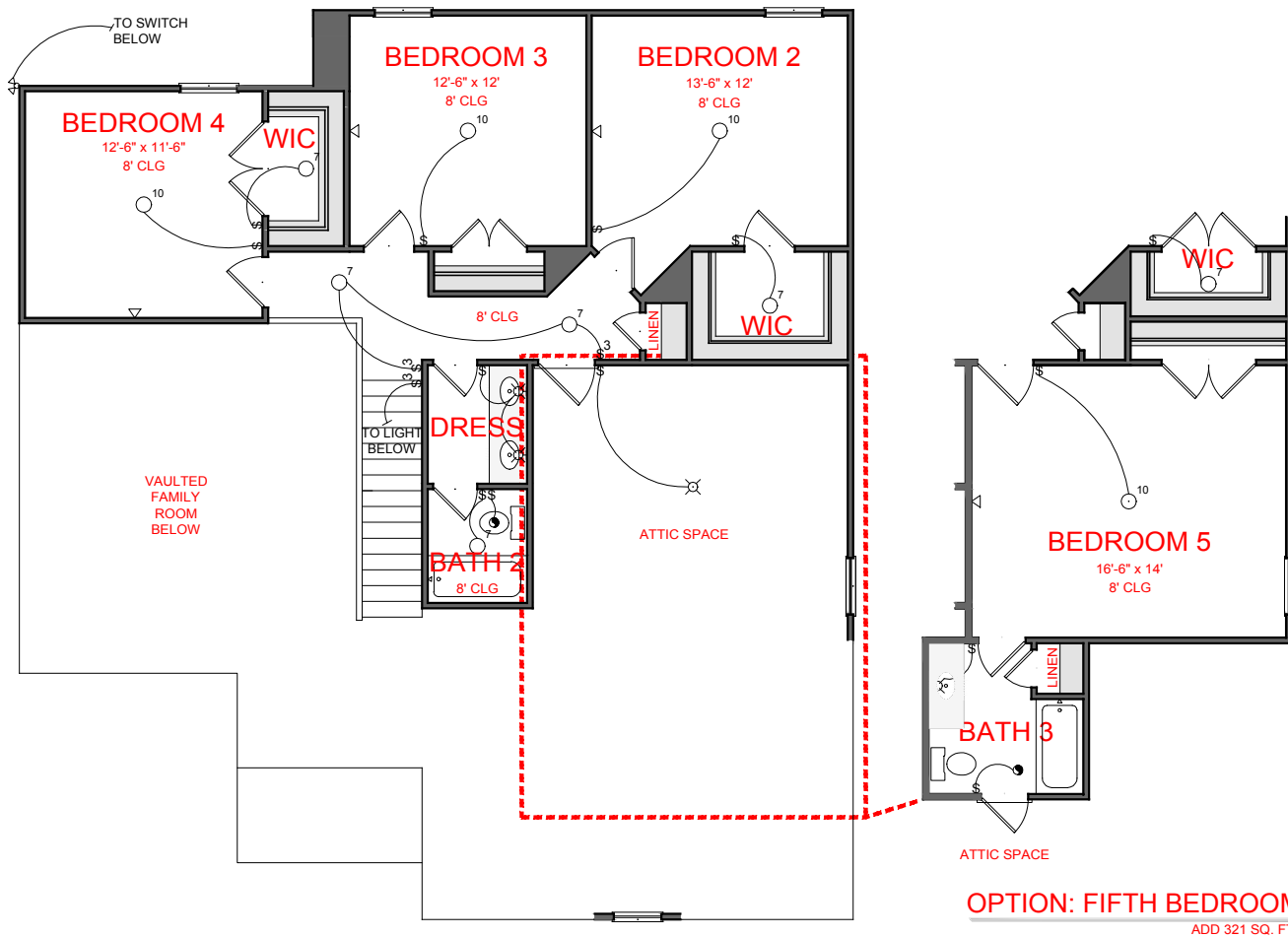
FIRST FLOOR PLAN

SANTA FE
SIDE ENTRY VERSION



SQUARE FOOTAGE:	
FIRST FLOOR:	1,337
SECOND FLOOR:	795
TOTAL:	2,132

*THE DRAWING(S) ON THIS PAGE ARE A GRAPHICAL REPRESENTATION ONLY. PLEASE CONSULT YOUR AGENT FOR SPECIFIC INFORMATION REGARDING THIS FLOOR PLAN. THE DESIGN OF THE FLOOR PLAN REPRESENTED IS SUBJECT TO CHANGE WITHOUT NOTICE.



SECOND FLOOR PLAN

OPTION: FIFTH BEDROOM
ADD 321 SQ. FT.

SANTA FE



SQUARE FOOTAGE:	
FIRST FLOOR:	1,337
SECOND FLOOR:	795
TOTAL:	2,132

*THE DRAWING(S) ON THIS PAGE ARE A GRAPHICAL REPRESENTATION ONLY. PLEASE CONSULT YOUR AGENT FOR SPECIFIC INFORMATION REGARDING THIS FLOOR PLAN. THE DESIGN OF THE FLOOR PLAN REPRESENTED IS SUBJECT TO CHANGE WITHOUT NOTICE.