

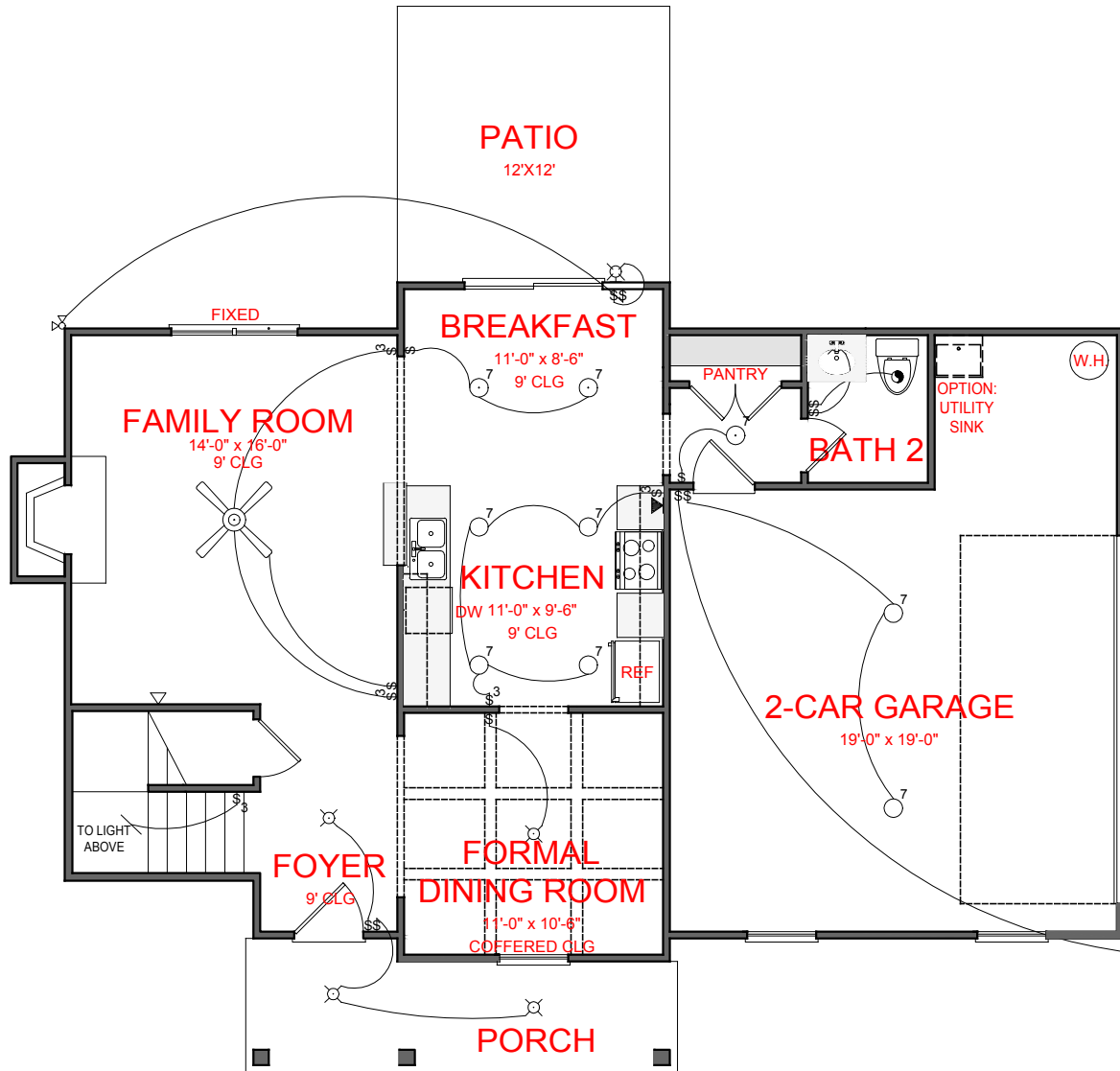
FRONT ELEVATION- A VERSION

CONCORD
 PINEY WOODS VERSION



SQUARE FOOTAGE:	
FIRST FLOOR:	792
SECOND FLOOR:	1,113
TOTAL:	1,905

*THE DRAWING(S) ON THIS PAGE ARE A GRAPHICAL REPRESENTATION ONLY. PLEASE CONSULT YOUR AGENT FOR SPECIFIC INFORMATION REGARDING THIS FLOOR PLAN. THE DESIGN OF THE FLOOR PLAN REPRESENTED IS SUBJECT TO CHANGE WITHOUT NOTICE.



FIRST FLOOR PLAN

- ELECTRICAL LEGEND**
- CEILING LIGHT FIXTURE
 - WALL LIGHT FIXTURE
 - 7" LED DISK
 - 10" LED DISK
 - CEILING FAN
 - FLOOD LIGHT FIXTURE
 - DUPLEX FLOOR OUTLET
 - TELEPHONE
 - NETWORK/CABLE
 - SWITCH
 - 3-WAY SWITCH
 - 4-WAY SWITCH
 - MOTION SENSOR SWITCH
 - EXHAUST FAN
 - EXHAUST FAN/LIGHT
 - SCONCE LIGHT FIXTURE

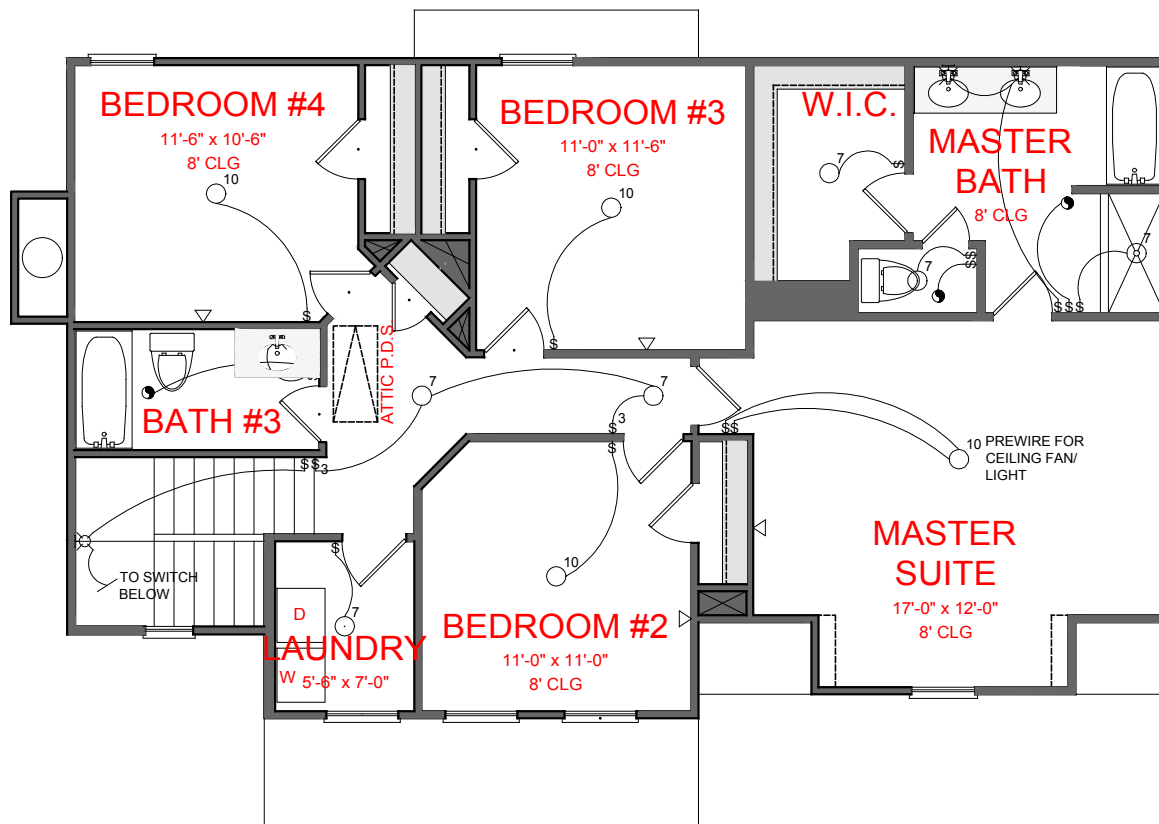
CONCORD
PINEY WOODS VERSION

JEFF LINDSEY COMMUNITIES
Live your dream.

SQUARE FOOTAGE:





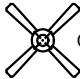




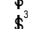





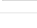
FIRST FLOOR:	792
SECOND FLOOR:	1,113
TOTAL:	1,905

*THE DRAWING(S) ON THIS PAGE ARE A GRAPHICAL REPRESENTATION ONLY. PLEASE CONSULT YOUR AGENT FOR SPECIFIC INFORMATION REGARDING THIS FLOOR PLAN. THE DESIGN OF THE FLOOR PLAN REPRESENTED IS SUBJECT TO CHANGE WITHOUT NOTICE.



OPTION:
3.0/5.0
WINDOW

ELECTRICAL LEGEND

-  CEILING LIGHT FIXTURE
-  WALL LIGHT FIXTURE
-  7" LED DISK
-  10" LED DISK
-  CEILING FAN
-  FLOOD LIGHT FIXTURE
-  DUPLEX FLOOR OUTLET
-  TELEPHONE
-  NETWORK/CABLE
-  SWITCH
-  3-WAY SWITCH
-  4-WAY SWITCH
-  MOTION SENSOR SWITCH
-  EXHAUST FAN
-  EXHAUST FAN/LIGHT
-  SCONCE LIGHT FIXTURE

SECOND FLOOR PLAN

CONCORD
PINEY WOODS VERSION

JEFF LINDSEY COMMUNITIES
Live your dream.

SQUARE FOOTAGE:

FIRST FLOOR:	792
SECOND FLOOR:	1,113
TOTAL:	1,905

*THE DRAWING(S) ON THIS PAGE ARE A GRAPHICAL REPRESENTATION ONLY. PLEASE CONSULT YOUR AGENT FOR SPECIFIC INFORMATION REGARDING THIS FLOOR PLAN. THE DESIGN OF THE FLOOR PLAN REPRESENTED IS SUBJECT TO CHANGE WITHOUT NOTICE.