

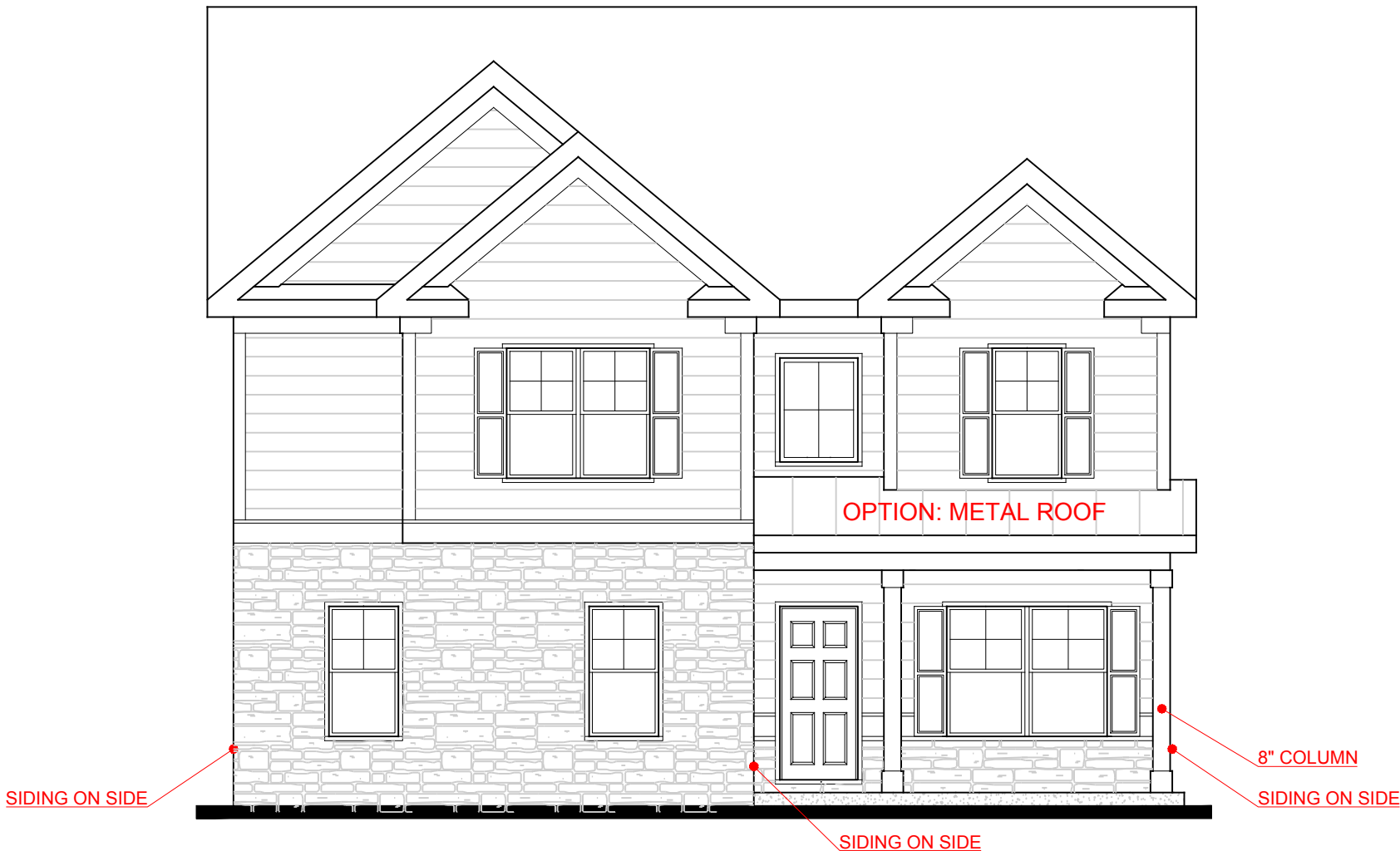
**FRONT ELEVATION- A VERSION**

**BISMARCK**  
SIDE ENTRY VERSION



SQUARE FOOTAGE:	
FIRST FLOOR:	802
SECOND FLOOR:	1,171
<b>TOTAL:</b>	<b>1,983</b>

THE DRAWING(S) ON THIS PAGE ARE A GRAPHICAL REPRESENTATION ONLY. PLEASE CONSULT YOUR AGENT FOR SPECIFIC INFORMATION REGARDING THIS FLOOR PLAN. THE DESIGN OF THE FLOOR PLAN REPRESENTED IS SUBJECT TO CHANGE WITHOUT NOTICE.



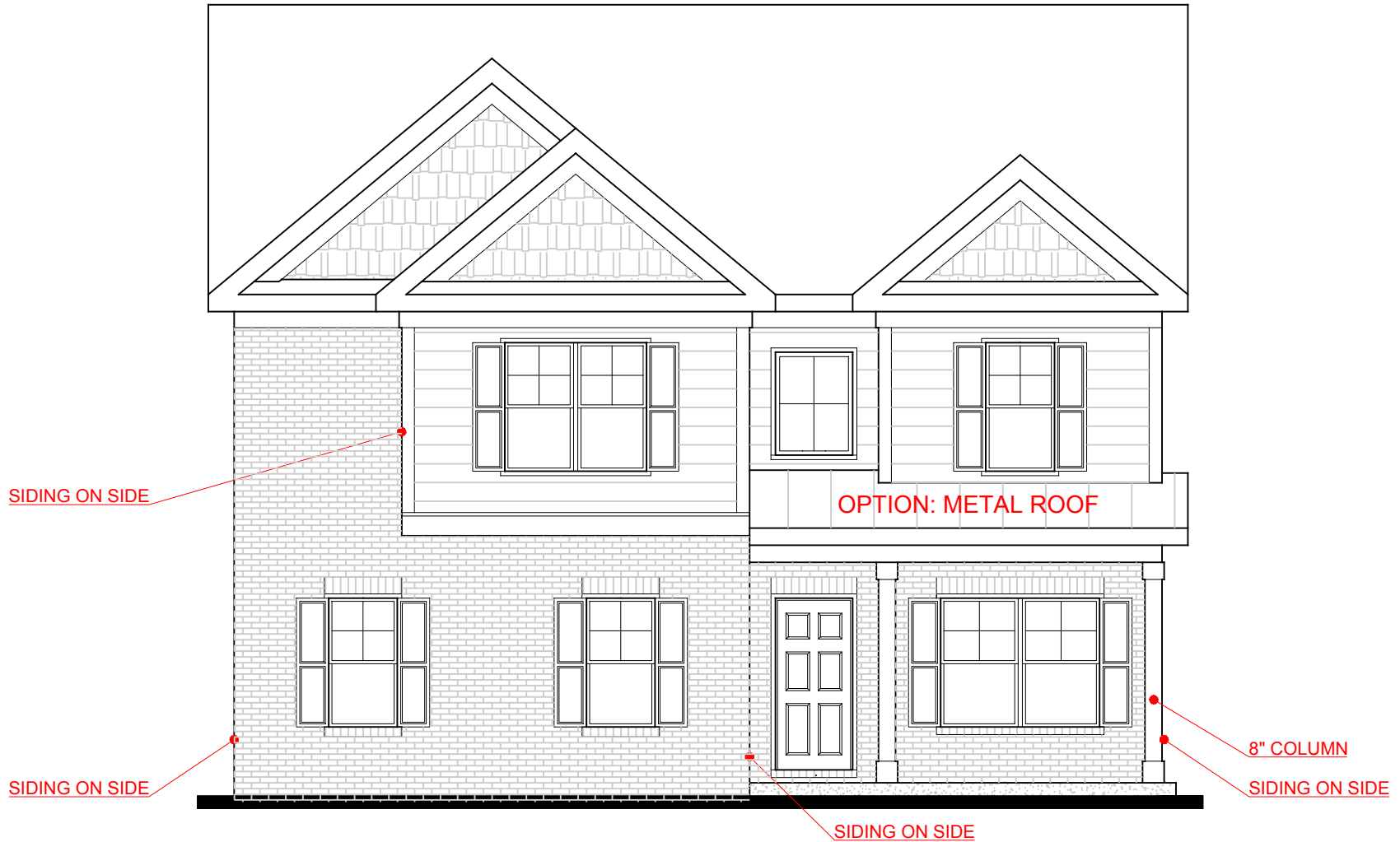
**FRONT ELEVATION- B VERSION**

**BISMARCK**  
SIDE ENTRY VERSION



SQUARE FOOTAGE:	
FIRST FLOOR:	802
SECOND FLOOR:	1,171
<b>TOTAL:</b>	<b>1,983</b>

\*THE DRAWING(S) ON THIS PAGE ARE A GRAPHICAL REPRESENTATION ONLY. PLEASE CONSULT YOUR AGENT FOR SPECIFIC INFORMATION REGARDING THIS FLOOR PLAN. THE DESIGN OF THE FLOOR PLAN REPRESENTED IS SUBJECT TO CHANGE WITHOUT NOTICE.



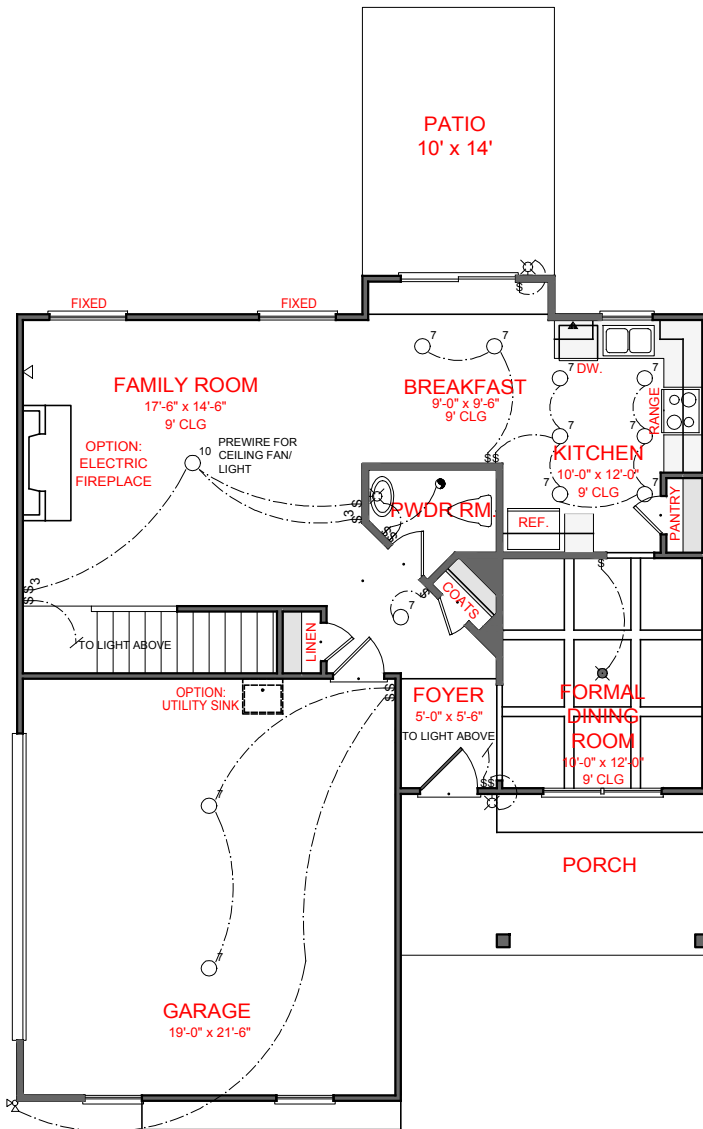
**FRONT ELEVATION- D VERSION**

**BISMARCK**  
SIDE ENTRY VERSION



SQUARE FOOTAGE:	
FIRST FLOOR:	802
SECOND FLOOR:	1,171
<b>TOTAL:</b>	<b>1,983</b>

\*THE DRAWING(S) ON THIS PAGE ARE A GRAPHICAL REPRESENTATION ONLY. PLEASE CONSULT YOUR AGENT FOR SPECIFIC INFORMATION REGARDING THIS FLOOR PLAN. THE DESIGN OF THE FLOOR PLAN REPRESENTED IS SUBJECT TO CHANGE WITHOUT NOTICE.



**FIRST FLOOR PLAN**

**ELECTRICAL LEGEND**

	CEILING LIGHT FIXTURE
	WALL LIGHT FIXTURE
	7" LED DISK
	10" LED DISK
	CEILING FAN
	FLOOD LIGHT FIXTURE
	DUPLEX FLOOR OUTLET
	TELEPHONE
	NETWORK/CABLE
	SWITCH
	3-WAY SWITCH
	4-WAY SWITCH
	MOTION SENSOR SWITCH
	EXHAUST FAN
	EXHAUST FAN/LIGHT
	SCONCE LIGHT FIXTURE

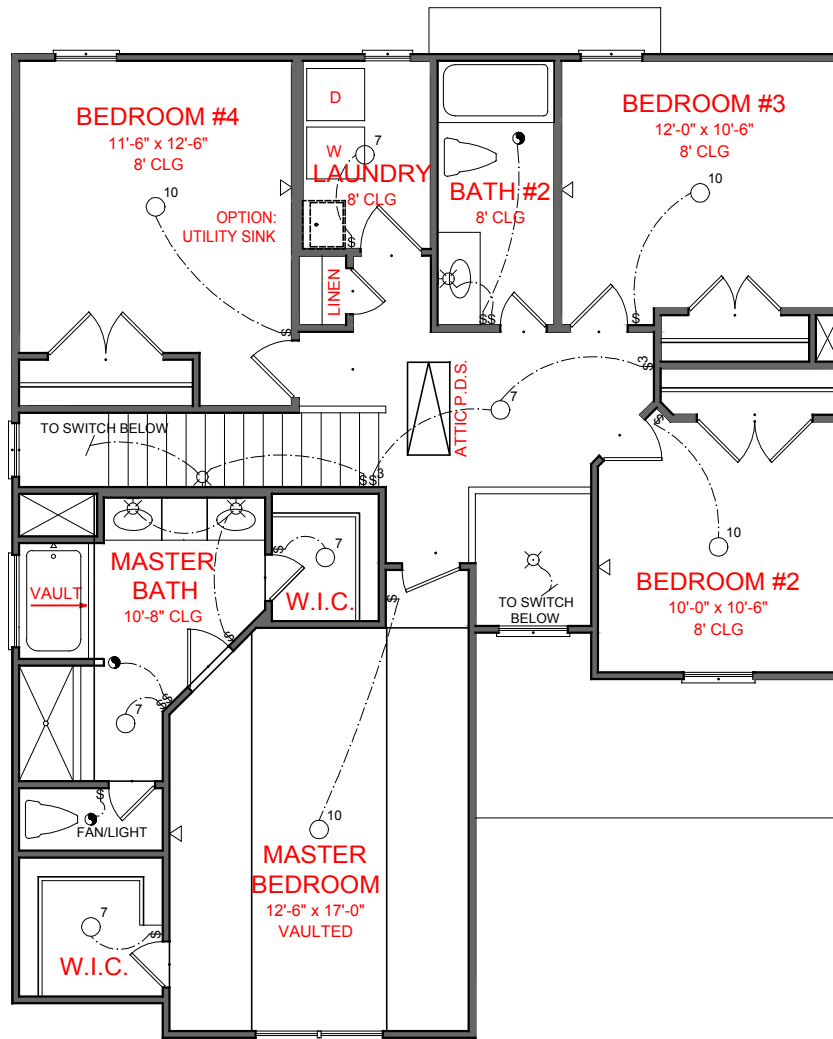
**BISMARCK**  
SIDE ENTRY VERSION



**SQUARE FOOTAGE:**

FIRST FLOOR:	802
SECOND FLOOR:	1,171
<b>TOTAL:</b>	<b>1,983</b>

THE DRAWING(S) ON THIS PAGE ARE A GRAPHICAL REPRESENTATION ONLY. PLEASE CONSULT YOUR AGENT FOR SPECIFIC INFORMATION REGARDING THIS FLOOR PLAN. THE DESIGN OF THE FLOOR PLAN REPRESENTED IS SUBJECT TO CHANGE WITHOUT NOTICE.



**SECOND FLOOR PLAN**

- ELECTRICAL LEGEND**
- CEILING LIGHT FIXTURE
  - WALL LIGHT FIXTURE
  - 7" LED DISK
  - 10" LED DISK
  - CEILING FAN
  - FLOOD LIGHT FIXTURE
  - DUPLEX FLOOR OUTLET
  - TELEPHONE
  - NETWORK/CABLE
  - SWITCH
  - 3-WAY SWITCH
  - 4-WAY SWITCH
  - MOTION SENSOR SWITCH
  - EXHAUST FAN
  - EXHAUST FAN/LIGHT
  - SCONCE LIGHT FIXTURE

**BISMARCK**



**SQUARE FOOTAGE:**

FIRST FLOOR:	802
SECOND FLOOR:	1,171
<b>TOTAL:</b>	<b>1,983</b>

\*THE DRAWING(S) ON THIS PAGE ARE A GRAPHICAL REPRESENTATION ONLY. PLEASE CONSULT YOUR AGENT FOR SPECIFIC INFORMATION REGARDING THIS FLOOR PLAN. THE DESIGN OF THE FLOOR PLAN REPRESENTED IS SUBJECT TO CHANGE WITHOUT NOTICE.