

GABLE BRACKET

CORBEL

OPTION: METAL ROOF

SIDING ON SIDE

8" COLUMN

SIDING ON SIDE

### FRONT ELEVATION- A VERSION

**BISMARCK**  
FRONT ENTRY VERSION



<b>SQUARE FOOTAGE:</b>	
FIRST FLOOR:	802
SECOND FLOOR:	1,171
<b>TOTAL:</b>	<b>1,983</b>

THE DRAWING(S) ON THIS PAGE ARE A GRAPHICAL REPRESENTATION ONLY. PLEASE CONSULT YOUR AGENT FOR SPECIFIC INFORMATION REGARDING THIS FLOOR PLAN. THE DESIGN OF THE FLOOR PLAN REPRESENTED IS SUBJECT TO CHANGE WITHOUT NOTICE.



OPTION: METAL ROOF

8" COLUMN

SIDING ON SIDE

SIDING ON SIDE

SIDING ON SIDE

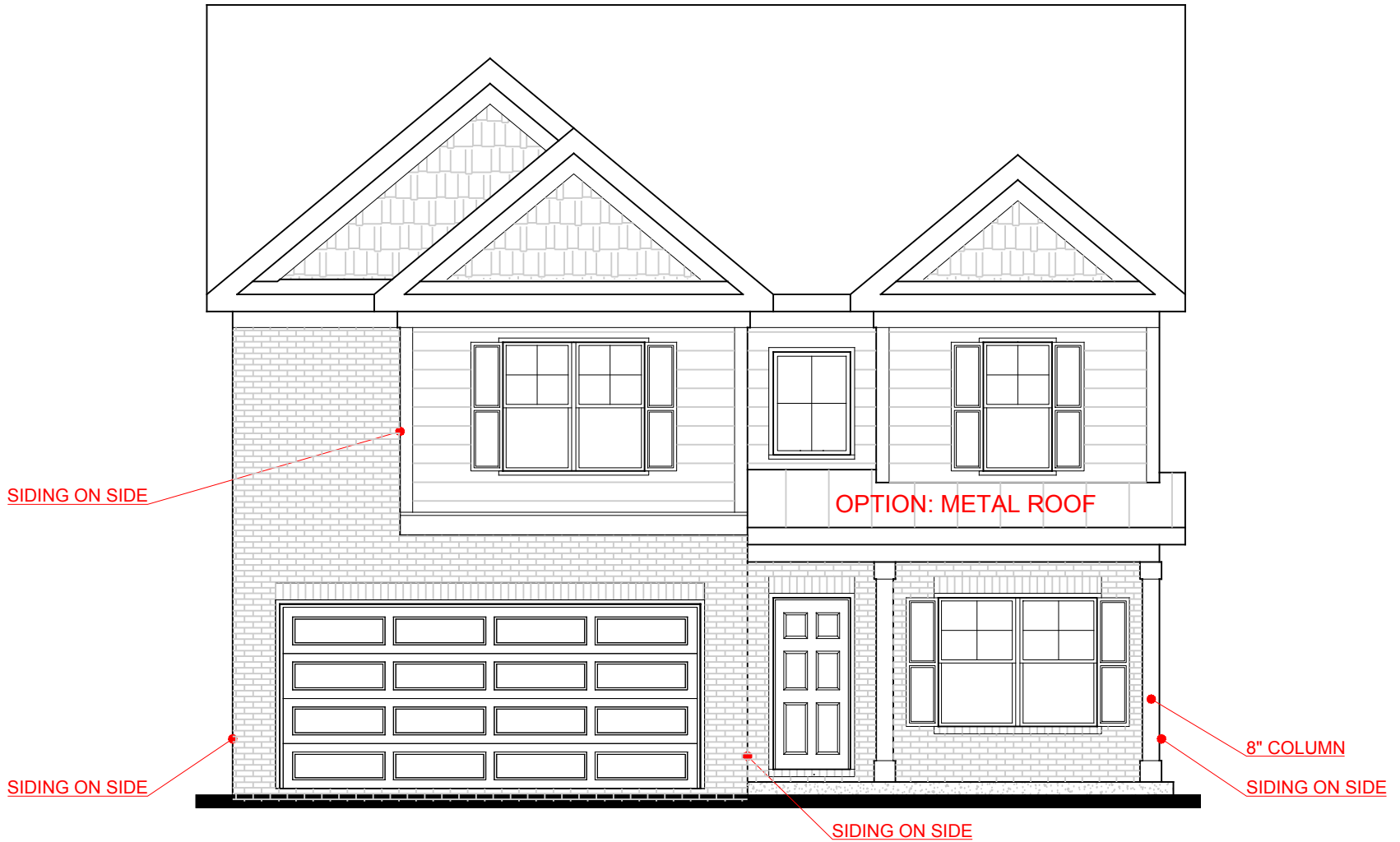
**FRONT ELEVATION- B VERSION**

**BISMARCK**  
FRONT ENTRY VERSION



<b>SQUARE FOOTAGE:</b>	
FIRST FLOOR:	802
SECOND FLOOR:	1,171
<b>TOTAL:</b>	<b>1,983</b>

THE DRAWING(S) ON THIS PAGE ARE A GRAPHICAL REPRESENTATION ONLY. PLEASE CONSULT YOUR AGENT FOR SPECIFIC INFORMATION REGARDING THIS FLOOR PLAN. THE DESIGN OF THE FLOOR PLAN REPRESENTED IS SUBJECT TO CHANGE WITHOUT NOTICE.



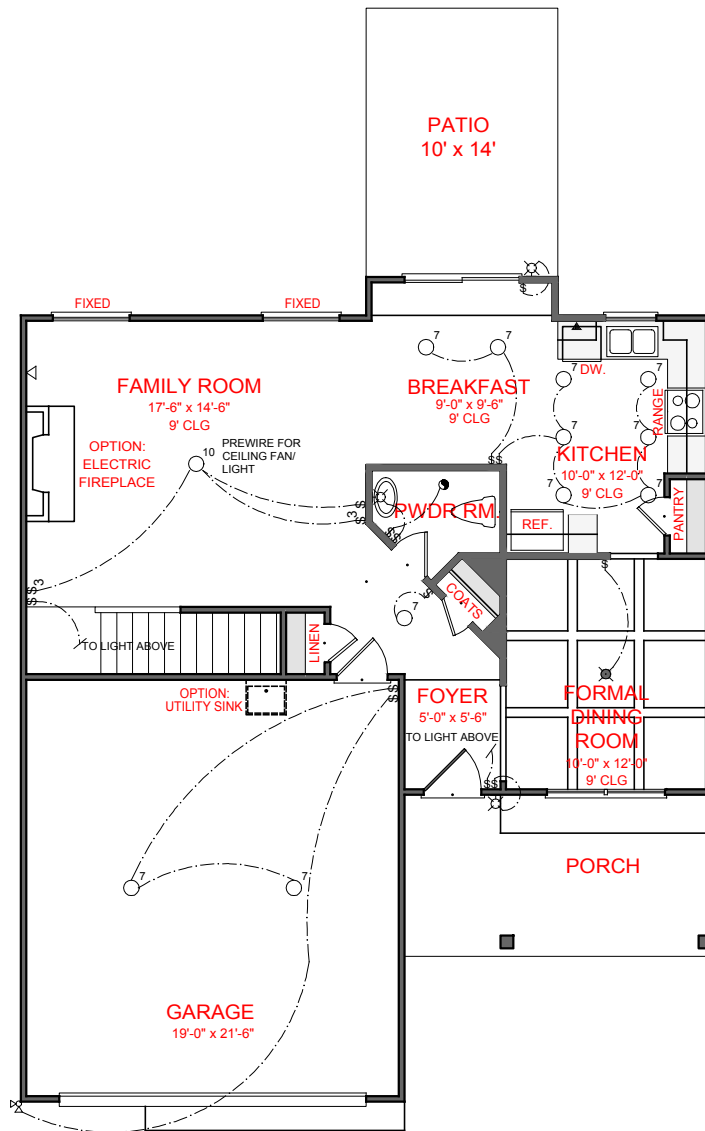
**FRONT ELEVATION- D VERSION**

**BISMARCK**  
FRONT ENTRY VERSION



SQUARE FOOTAGE:	
FIRST FLOOR:	802
SECOND FLOOR:	1,171
<b>TOTAL:</b>	<b>1,983</b>

THE DRAWING(S) ON THIS PAGE ARE A GRAPHICAL REPRESENTATION ONLY. PLEASE CONSULT YOUR AGENT FOR SPECIFIC INFORMATION REGARDING THIS FLOOR PLAN. THE DESIGN OF THE FLOOR PLAN REPRESENTED IS SUBJECT TO CHANGE WITHOUT NOTICE.



FIRST FLOOR PLAN

- ELECTRICAL LEGEND**
- CEILING LIGHT FIXTURE
  - WALL LIGHT FIXTURE
  - 7" LED DISK
  - 10" LED DISK
  - CEILING FAN
  - FLOOD LIGHT FIXTURE
  - DUPLEX FLOOR OUTLET
  - TELEPHONE
  - NETWORK/CABLE
  - SWITCH
  - 3-WAY SWITCH
  - 4-WAY SWITCH
  - MOTION SENSOR SWITCH
  - EXHAUST FAN
  - EXHAUST FAN/LIGHT
  - SCONCE LIGHT FIXTURE

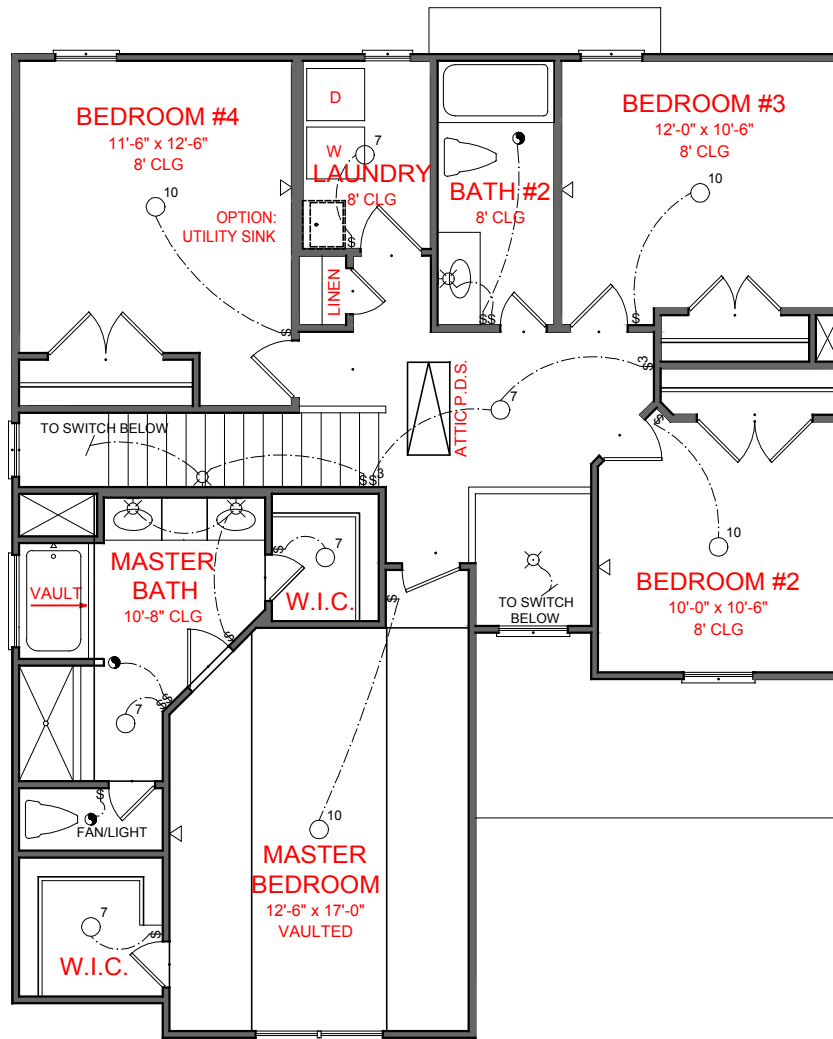
**BISMARCK**  
FRONT ENTRY VERSION



**SQUARE FOOTAGE:**





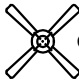




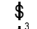
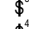
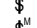

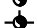


FIRST FLOOR:	802
SECOND FLOOR:	1,171
TOTAL:	1,983

\*THE DRAWING(S) ON THIS PAGE ARE A GRAPHICAL REPRESENTATION ONLY. PLEASE CONSULT YOUR AGENT FOR SPECIFIC INFORMATION REGARDING THIS FLOOR PLAN. THE DESIGN OF THE FLOOR PLAN REPRESENTED IS SUBJECT TO CHANGE WITHOUT NOTICE.



**SECOND FLOOR PLAN**

**ELECTRICAL LEGEND**

-  CEILING LIGHT FIXTURE
-  WALL LIGHT FIXTURE
-  7" LED DISK
-  10" LED DISK
-  CEILING FAN
-  FLOOD LIGHT FIXTURE
-  DUPLEX FLOOR OUTLET
-  TELEPHONE
-  NETWORK/CABLE
-  SWITCH
-  3-WAY SWITCH
-  4-WAY SWITCH
-  MOTION SENSOR SWITCH
-  EXHAUST FAN
-  EXHAUST FAN/LIGHT
-  SCONCE LIGHT FIXTURE

**BISMARCK**



SQUARE FOOTAGE:	
FIRST FLOOR:	802
SECOND FLOOR:	1,171
TOTAL:	1,983

\*THE DRAWING(S) ON THIS PAGE ARE A GRAPHICAL REPRESENTATION ONLY. PLEASE CONSULT YOUR AGENT FOR SPECIFIC INFORMATION REGARDING THIS FLOOR PLAN. THE DESIGN OF THE FLOOR PLAN REPRESENTED IS SUBJECT TO CHANGE WITHOUT NOTICE.