



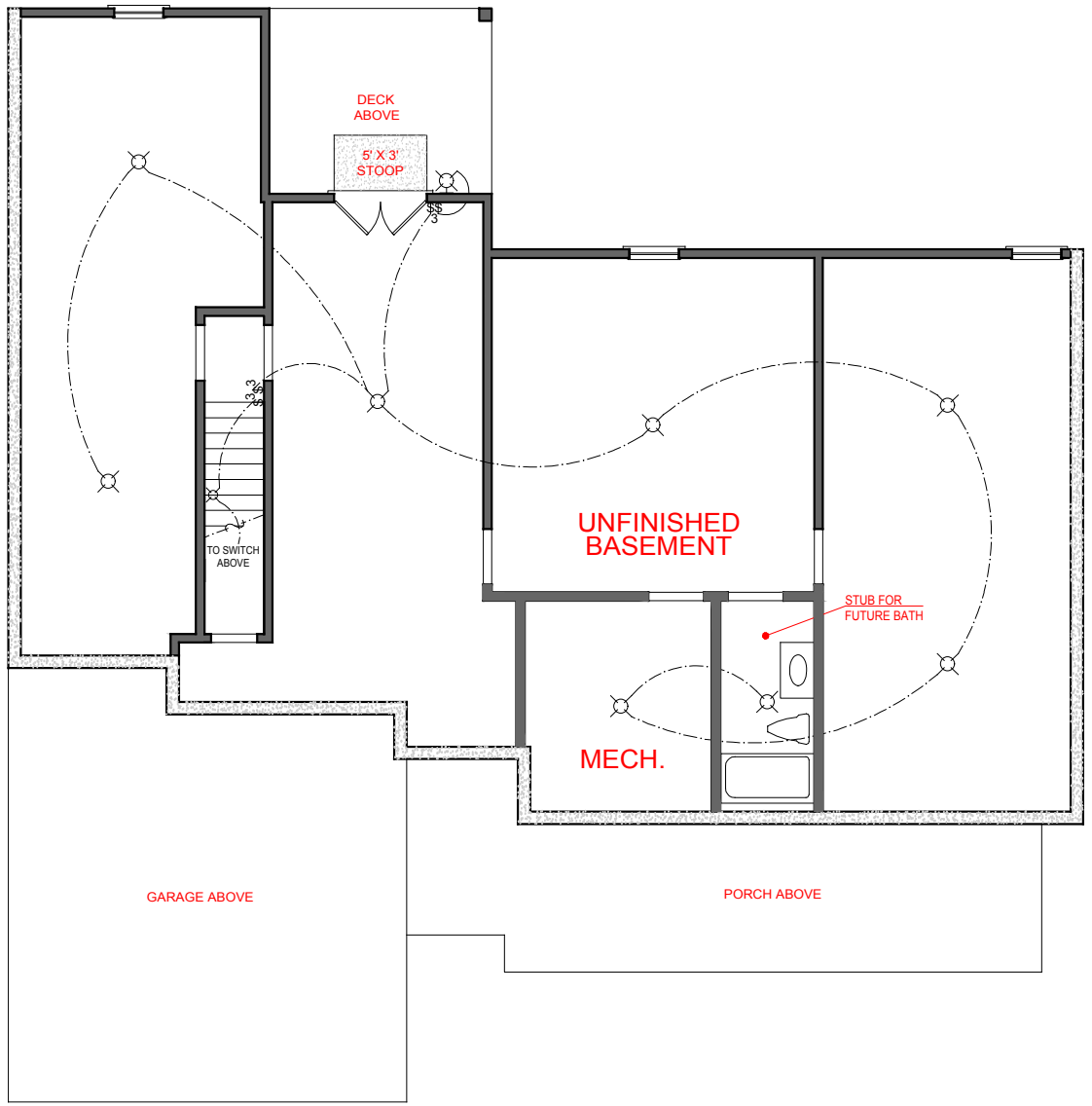
FRONT ELEVATION- A VERSION

BENSON
FRONT ENTRY VERSION







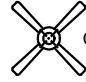
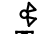


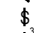
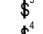
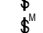





SQUARE FOOTAGE:	
FIRST FLOOR:	1,839
SECOND FLOOR:	475
TOTAL:	2,314

*THE DRAWING(S) ON THIS PAGE ARE A GRAPHICAL REPRESENTATION ONLY. PLEASE CONSULT YOUR AGENT FOR SPECIFIC INFORMATION REGARDING THIS FLOOR PLAN. THE DESIGN OF THE FLOOR PLAN REPRESENTED IS SUBJECT TO CHANGE WITHOUT NOTICE.



BASEMENT PLAN

ELECTRICAL LEGEND

-  CEILING LIGHT FIXTURE
-  WALL LIGHT FIXTURE
-  7" LED DISK
-  10" LED DISK
-  CEILING FAN
-  FLOOD LIGHT FIXTURE
-  DUPLEX FLOOR OUTLET
-  TELEPHONE
-  NETWORK/CABLE
-  SWITCH
-  3-WAY SWITCH
-  4-WAY SWITCH
-  MOTION SENSOR SWITCH
-  EXHAUST FAN
-  EXHAUST FAN/LIGHT
-  SCONCE LIGHT FIXTURE

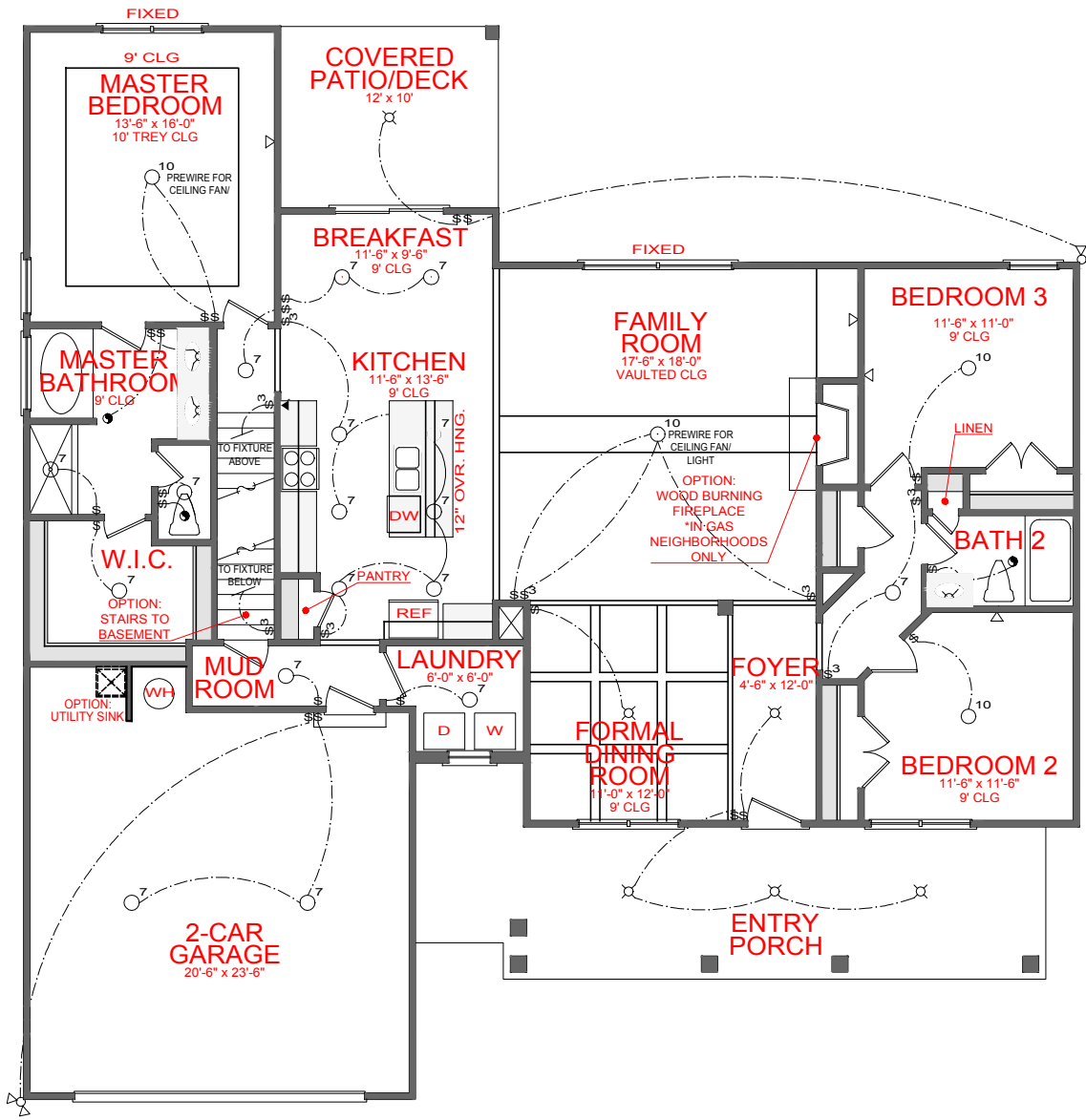
BENSON
FRONT ENTRY VERSION



SQUARE FOOTAGE:

FIRST FLOOR:	1,839
SECOND FLOOR:	475
TOTAL:	2,314

THE DRAWING(S) ON THIS PAGE ARE A GRAPHICAL REPRESENTATION ONLY. PLEASE CONSULT YOUR AGENT FOR SPECIFIC INFORMATION REGARDING THIS FLOOR PLAN. THE DESIGN OF THE FLOOR PLAN REPRESENTED IS SUBJECT TO CHANGE WITHOUT NOTICE.



FIRST FLOOR PLAN

ELECTRICAL LEGEND

- CEILING LIGHT FIXTURE
- WALL LIGHT FIXTURE
- 7" LED DISK
- 10" LED DISK
- CEILING FAN
- FLOOD LIGHT FIXTURE
- DUPLEX FLOOR OUTLET
- TELEPHONE
- NETWORK/CABLE
- SWITCH
- 3-WAY SWITCH
- 4-WAY SWITCH
- MOTION SENSOR SWITCH
- EXHAUST FAN
- EXHAUST FAN/LIGHT
- SCONCE LIGHT FIXTURE

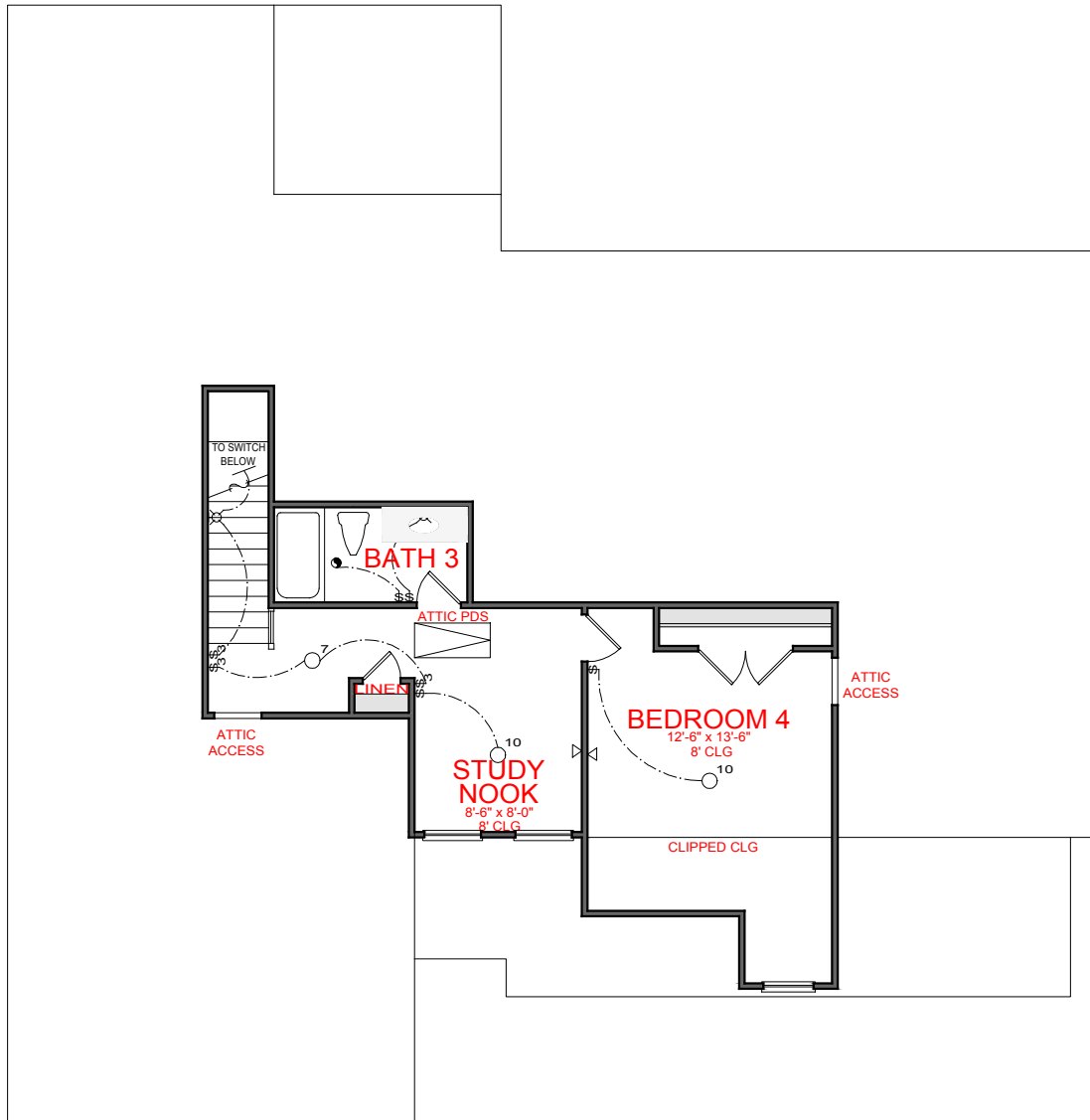
BENSON
FRONT ENTRY VERSION



SQUARE FOOTAGE:

FIRST FLOOR:	1,839
SECOND FLOOR:	475
TOTAL:	2,314

*THE DRAWING(S) ON THIS PAGE ARE A GRAPHICAL REPRESENTATION ONLY. PLEASE CONSULT YOUR AGENT FOR SPECIFIC INFORMATION REGARDING THIS FLOOR PLAN. THE DESIGN OF THE FLOOR PLAN REPRESENTED IS SUBJECT TO CHANGE WITHOUT NOTICE.



SECOND FLOOR PLAN

ELECTRICAL LEGEND

- CEILING LIGHT FIXTURE
- WALL LIGHT FIXTURE
- 7" LED DISK
- 10" LED DISK
- CEILING FAN
- FLOOD LIGHT FIXTURE
- DUPLEX FLOOR OUTLET
- TELEPHONE
- NETWORK/CABLE
- SWITCH
- 3-WAY SWITCH
- 4-WAY SWITCH
- MOTION SENSOR SWITCH
- EXHAUST FAN
- EXHAUST FAN/LIGHT
- SCONCE LIGHT FIXTURE

BENSON
FRONT ENTRY VERSION



SQUARE FOOTAGE:	
FIRST FLOOR:	1,839
SECOND FLOOR:	475
TOTAL:	2,314

*THE DRAWING(S) ON THIS PAGE ARE A GRAPHICAL REPRESENTATION ONLY. PLEASE CONSULT YOUR AGENT FOR SPECIFIC INFORMATION REGARDING THIS FLOOR PLAN. THE DESIGN OF THE FLOOR PLAN REPRESENTED IS SUBJECT TO CHANGE WITHOUT NOTICE.