

FRONT ELEVATION - B VERSION

BELMONT

45° VERSION



*THE DRAWING(S) ON THIS PAGE ARE A GRAPHICAL REPRESENTATION ONLY. PLEASE CONSULT YOUR AGENT FOR SPECIFIC INFORMATION REGARDING THIS FLOOR PLAN. THE DESIGN OF THE FLOOR PLAN REPRESENTED IS SUBJECT TO CHANGE WITHOUT NOTICE.

SQUARE FOOTAGE:	
FIRST FLOOR:	2,470 SQ. FT.
SECOND FLOOR:	1,740 SQ. FT.
TOTAL:	4,210 SQ. FT.



FRONT ELEVATION - D VERSION

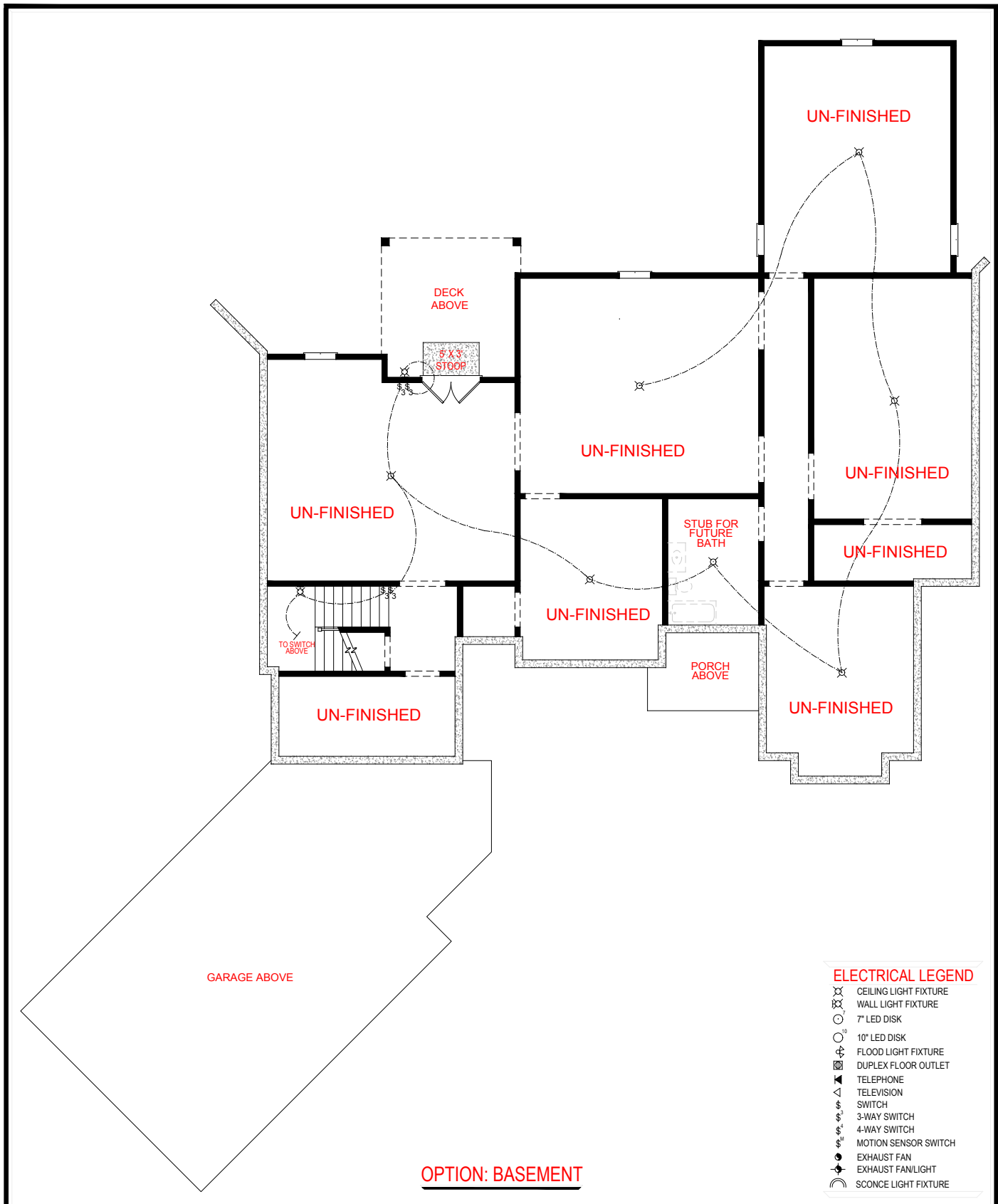
BELMONT

45° VERSION



*THE DRAWING(S) ON THIS PAGE ARE A GRAPHICAL REPRESENTATION ONLY. PLEASE CONSULT YOUR AGENT FOR SPECIFIC INFORMATION REGARDING THIS FLOOR PLAN. THE DESIGN OF THE FLOOR PLAN REPRESENTED IS SUBJECT TO CHANGE WITHOUT NOTICE.

SQUARE FOOTAGE:	
FIRST FLOOR:	2,470 SQ. FT.
SECOND FLOOR:	1,740 SQ. FT.
TOTAL:	4,210 SQ. FT.



BELMONT

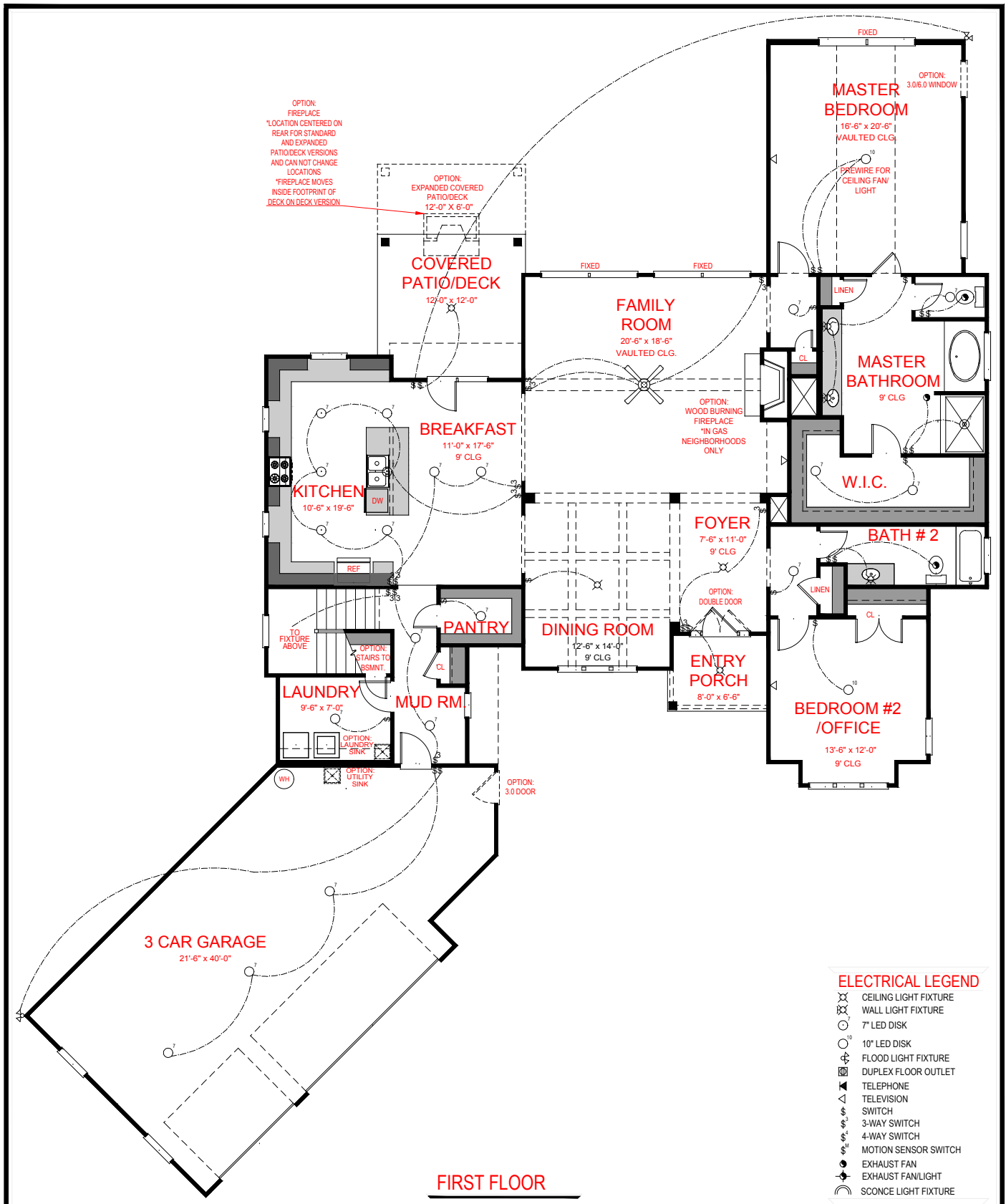
45° VERSION



*THE DRAWING(S) ON THIS PAGE ARE A GRAPHICAL REPRESENTATION ONLY. PLEASE CONSULT YOUR AGENT FOR SPECIFIC INFORMATION REGARDING THIS FLOOR PLAN. THE DESIGN OF THE FLOOR PLAN REPRESENTED IS SUBJECT TO CHANGE WITHOUT NOTICE.

SQUARE FOOTAGE:

FIRST FLOOR:	2,470 SQ. FT.
SECOND FLOOR:	1,740 SQ. FT.
TOTAL:	4,210 SQ. FT.



OPTION:
FIREPLACE
*LOCATION CENTERED ON
REAR FOR STANDARD
AND EXPANDED
PATIO/DECK VERSIONS
AND CAN NOT CHANGE
LOCATIONS
*FIREPLACE MOVES
INSIDE FOOTPRINT OF
DECK ON DECK VERSION

OPTION:
EXPANDED COVERED
PATIO/DECK
12'-0" x 6'-0"

FIXED
OPTION:
3.0/6.0 WINDOW

**MASTER
BEDROOM**
16'-6" x 20'-6"
VAULTED CLG.

PREWIRE FOR
CEILING FAN/
LIGHT

**COVERED
PATIO/DECK**
12'-0" x 12'-0"

**FAMILY
ROOM**
20'-6" x 18'-6"
VAULTED CLG.

**MASTER
BATHROOM**
9' CLG

BREAKFAST
11'-0" x 17'-6"
9' CLG

OPTION:
WOOD BURNING
FIREPLACE
*IN GAS
NEIGHBORHOODS
ONLY

KITCHEN
10'-6" x 19'-6"
DW

W.I.C.

FOYER
7'-6" x 11'-0"
9' CLG

BATH # 2

TO
FIXTURE
ABOVE

PANTRY

DINING ROOM
12'-6" x 14'-0"
9' CLG

OPTION:
DOUBLE DOOR

**ENTRY
PORCH**
8'-0" x 6'-6"

**BEDROOM #2
/OFFICE**
13'-6" x 12'-0"
9' CLG

LAUNDRY
9'-6" x 7'-0"

MUD RM.

OPTION:
LAUNDRY
SINK

OPTION:
3.0 DOOR

3 CAR GARAGE
21'-6" x 40'-0"

ELECTRICAL LEGEND

- ⊗ CEILING LIGHT FIXTURE
- ⊗ WALL LIGHT FIXTURE
- 7" LED DISK
- 10" LED DISK
- ⊕ FLOOD LIGHT FIXTURE
- ⊕ DUPLEX FLOOR OUTLET
- ☎ TELEPHONE
- △ TELEVISION
- ⊞ SWITCH
- ⊞ 3-WAY SWITCH
- ⊞ 4-WAY SWITCH
- ⊞ MOTION SENSOR SWITCH
- ⊞ EXHAUST FAN
- ⊞ EXHAUST FAN/LIGHT
- ⊞ SCONCE LIGHT FIXTURE

FIRST FLOOR

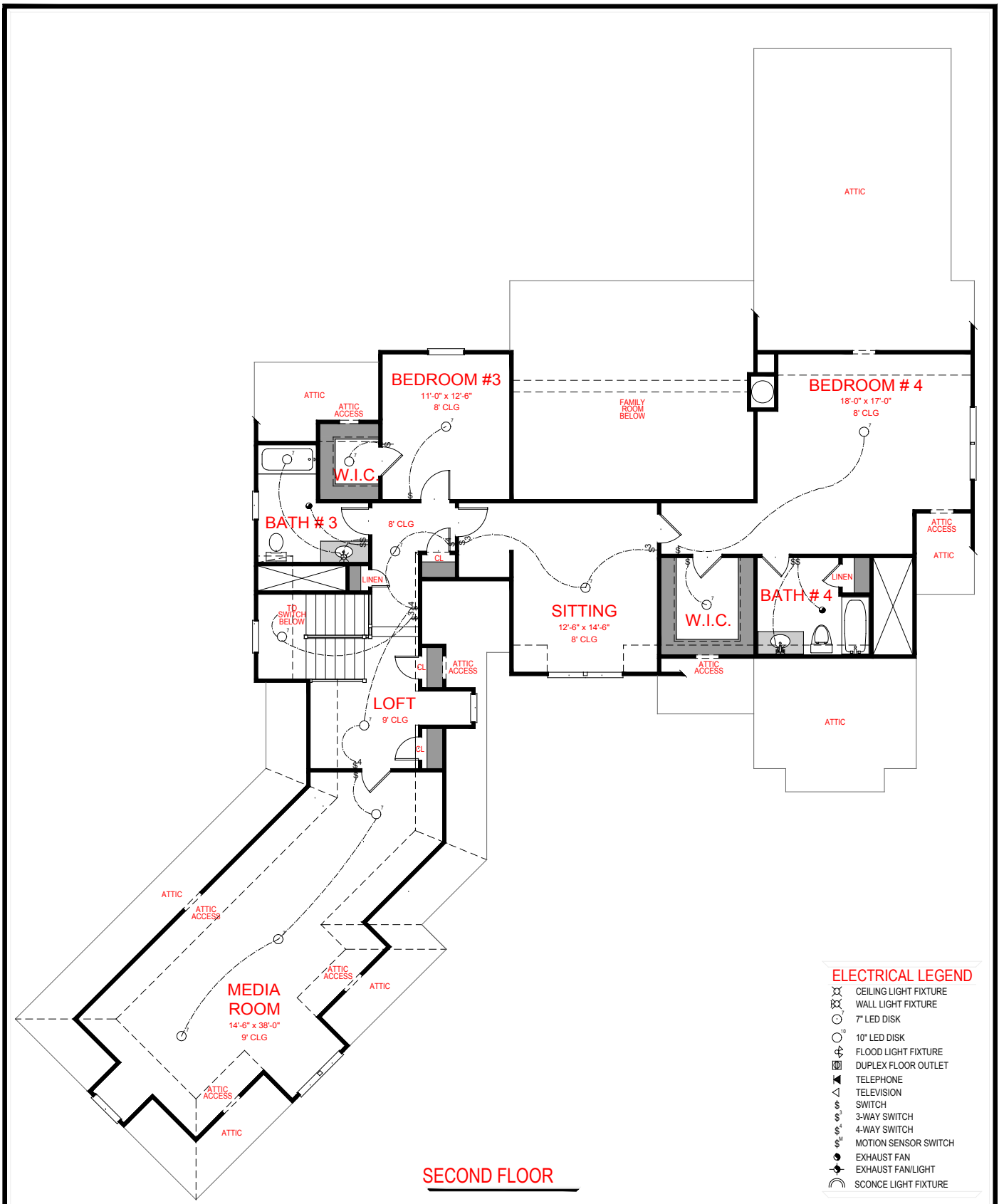
BELMONT

45° VERSION

**JEFF LINDSEY
COMMUNITIES**
Live your dream.

*THE DRAWING(S) ON THIS PAGE ARE A GRAPHICAL
REPRESENTATION ONLY. PLEASE CONSULT YOUR AGENT FOR
SPECIFIC INFORMATION REGARDING THIS FLOOR PLAN.
THE DESIGN OF THE FLOOR PLAN REPRESENTED IS SUBJECT TO
CHANGE WITHOUT NOTICE.

SQUARE FOOTAGE:
FIRST FLOOR: 2,470 SQ. FT.
SECOND FLOOR: 1,740 SQ. FT.
TOTAL: 4,210 SQ. FT.



SECOND FLOOR

ELECTRICAL LEGEND

- ⊗ CEILING LIGHT FIXTURE
- ⊗ WALL LIGHT FIXTURE
- 7" LED DISK
- 10" LED DISK
- ⊕ FLOOD LIGHT FIXTURE
- ⊕ DUPLEX FLOOR OUTLET
- ☎ TELEPHONE
- △ TELEVISION
- ⊞ SWITCH
- ⊞ 3-WAY SWITCH
- ⊞ 4-WAY SWITCH
- ⊞ MOTION SENSOR SWITCH
- ⊞ EXHAUST FAN
- ⊞ EXHAUST FAN/LIGHT
- ⊞ SCONCE LIGHT FIXTURE

BELMONT
45° VERSION

JEFF LINDSEY COMMUNITIES
Live your dream.

*THE DRAWING(S) ON THIS PAGE ARE A GRAPHICAL REPRESENTATION ONLY. PLEASE CONSULT YOUR AGENT FOR SPECIFIC INFORMATION REGARDING THIS FLOOR PLAN. THE DESIGN OF THE FLOOR PLAN REPRESENTED IS SUBJECT TO CHANGE WITHOUT NOTICE.

SQUARE FOOTAGE:

FIRST FLOOR:	2,470 SQ. FT.
SECOND FLOOR:	1,740 SQ. FT.
TOTAL:	4,210 SQ. FT.