



FULTON COUNTY, GA

RUBY CREEK ESTATES

FROM THE

360's

Coming Soon

SALES CENTER

No Sales Center On Site* Demooney and Lyons Ruby Lane
South Fulton, GA 30349

HOURS OF OPERATION

Call for Appointment

DIRECTIONS

From Camp Creek Pkwy @ I-285 (Exit 2) go west approximately 5 miles to Enon Rd., then turn left. Continue on Enon Rd. to Stonewall Tell Rd., once you cross Stonewall Tell Rd., Enon Rd. becomes Demooney Rd. Continue on Demooney Rd. for approximately 2.5 miles, Ruby Creek Estates is on the left.

Ruby Creek Estates is another fabulous community built by Freedom Builders. Located in South Fulton Georgia, Ruby Creek Estates will feature traditional and Craftsman style homes, the community will also include ranch, two story, and master-on-main home designs. With only 25 premium home sites available, opportunities to build your dream home in this highly sought after location is limited - schedule your personal consultation today!

KYLE JOHNSON

(770) 309-8245

kyle.johnson@freedombuilderhomes.com

LAURENCE MCDADE

(678) 886-1583

laurence.mcdade@freedombuilderhomes.com

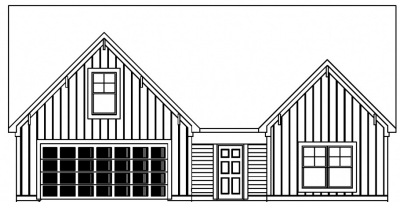


Marketed By: Lindsey Marketing Group Offered By: Freedom Builder Homes



Equal Housing Opportunity. All information is believed to be accurate, but is not guaranteed and is therefore subject to errors and changes without notice.

THE IDEAL PLAN FOR YOU AND YOUR FAMILY



ALBANY A

Base Price: **\$395,700** 2,052 sqft 3 Beds 2 Baths



AUSTIN A

Base Price: **\$379,900** 2,224 sqft 4 Beds 3 Baths



BENSON A

Base Price: **\$408,700** 2,314 sqft 4 Beds 3 Baths



BISMARCK A

Base Price: **\$369,500** 2,005 sqft 4 Beds 2.5 Baths



CONCORD A

Base Price: **\$373,700** 1,915 sqft 4 Beds 2.5 Baths



HARRISBURG A 4 BED

Base Price: **\$388,900** 2,263 sqft 4 Beds 2.5 Baths



MADISON A

Base Price: **\$386,900** 2,058 sqft 3 Beds 2 Baths



RALEIGH A

Base Price: **\$360,500** 1,754 sqft 3 Beds 2 Baths



RICHMOND A

Base Price: **\$378,700** 2,165 sqft 4 Beds 2.5 Baths



SANTA FE A

Base Price: **\$399,900** 2,118 sqft 4 Beds 2.5 Baths

SALES CENTER

No Sales Center On Site* Demooney and
Lyons Ruby Lane
South Fulton, GA 30349

SALES CENTER ASSOCIATE

Kyle Johnson - (770) 309-8245
Laurence Mcdade - (678) 886-1583

HOURS OF OPERATION

Call for Appointment

*Base prices do not reflect options or applicable lot premiums
These prices and features are accurate as of 2023-05-22 18:15 and subject to change thereafter.





INCLUDED *FEATURES* SILVER

INTERIOR

- 9' Smooth Ceilings on Main Floor
- Ceiling Fan in Family Room & Pre-Wire in Master Bedroom
- Designer Interior Doors
- Satin Nickel or Oil Rubbed Bronze Door Hardware
- Trimmed Knee Wall on Staircase
- Coffered Ceiling in Dining Room*
- Chair Rail and Shadow Box Trim in Dining Room*
- LVP in Foyer, Dining, Kitchen and Breakfast*
- Vinyl Flooring in Laundry Room & Secondary Baths
- Cultured Marble in Master and Laminate in Secondary Baths
- Garage Door Opener with 2 Remotes
- Electric Fireplace with Marble Surround
- Designer Nickel or Bronze Lighting & Plumbing Fixtures
- Pre-Finished Engineered Shelving
- Large Walk-In Closets
- Low Voltage Package with Structured Wiring Box
- Phone Jacks in Master Bedroom & Kitchen
- Cable outlet in Every Bedroom & Family Room
- Indoor Utility/Laundry Room with Electrical Connections & Vent

KITCHEN

- Stainless Steel Undermount Sink
- Single Lever Faucet with Vegetable Sprayer

- Stainless Steel Appliances Includes Electric Range, Microhood & Dishwasher
- Flat Panel Cabinets with Decorative Cabinet Hardware and Crown Molding*
- Granite Countertops
- Decorative Level One Tile Backsplash
- Chef's Pantry with Shelving Suite
- 7" LED Disc Lighting

MASTER SUITE

- Double Custom Cultured Marble Vanity
- 5' Fiberglass Shower and Garden Tub
- Large Carpeted Walk-In closets
- Vaulted Ceilings*
- Trey Ceilings*
- Private Sitting Room*

EXTERIOR

- Fiber Cement Siding
- Divided Light Window Grids on Front
- Architectural Roof Shingles
- Master Planned Landscape Packages with Sodded Lawn
- 12X12 Uncovered Patio*
- Lifetime Vinyl Soffit
- Shutters*
- Exterior Floodlights
- Front & Rear Electrical Outlets & Water Faucets

ENERGY FEATURES

- Electric Dryer Hook-up
- Quick Recovery Hot Water Heater
- Energy Efficient Heat & Air Systems
- Insulated Low E Windows and Doors
- R-19 Vaulted Ceilings, R-30 Flat Ceilings, R-13 Exterior Walls

COMMUNITY EXCLUSIVE FEATURES

- One Acre Plus Home Sites
- Underground Utilities
- County Water & Septic Tanks
- FHA/VA Approved
- HOA & Protective Covenants
- Street Lights

* Varies per Plan

Photo shown is representation & may reflect options/upgrades not included in listed price

*Base prices do not reflect options or applicable lot premiums
These prices and features are accurate as of 2023-05-22 18:15 and subject to change thereafter.

