



FROM THE

## 450's

## SALES CENTER

15 Maple Lane Williamson, GA 30292  
Williamson, GA 30292

## HOURS OF OPERATION

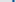
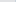
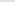
By Appointment Only

## DIRECTIONS

1-75 S to exit 205, Turn RIGHT off exit, Turn LEFT onto S Tenth Street. Turn LEFT Meriwether Street, Turn LEFT onto Williamson Zebulon Rd. Turn LEFT into Ashley Glen.

Freedom Builders Homes is now selling in the prominent Ashley Glen subdivision in Williamson, Georgia!

These gorgeous craftsman-style homes offer desirable features that include the primary bedrooms on the main floor, large gathering rooms, open concept kitchens, spacious, well-appointed secondary bedrooms, lofts, covered patios and much more!

Each side entry garage home is nestled on a beautifully landscaped (1+ acre) lot. This charming swim/tennis community provides small town living    ing minutes away from I-

75. **Marketed By: Lindsey Marketing Group Offered By: Freedom Builder Homes**  
Freedom Builder Homes offers 3% compensation to the selling broker. Please see Equal Housing Opportunity. All information is believed to be true and correct as of the date of preparation and is therefore not to be construed as an offer or solicitation of any security or investment.

Marketed By: Lindsey Marketing Group Offered By: Freedom Builder Homes  
Lindsey Marketing Group offers 3% compensation to the selling agent.  
Lindsey Marketing Group Equal Housing Opportunity. All information is believed to be true and is in good faith and is therefore subject to errors and changes without notice.

**Lindsey Marketing**  
Group



ny



## THE IDEAL **PLAN** FOR YOU AND YOUR FAMILY



### ANDERSON B

Base Price: **\$513,500**  
3,505 sqft 4 Beds 3.5 Baths



### BENSON B XL

Base Price: **\$472,900** 2,977 sqft 4 Beds 3 Baths



### BRANTLEY B

Base Price: **\$459,900** 2,660 sqft 4 Beds 3 Baths



### CARAY C

Base Price: **\$489,900**  
2,792 sqft 5 Beds 3.5 Baths



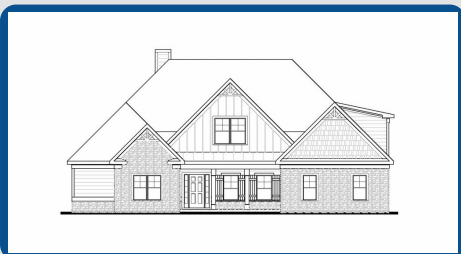
### CRAWFORD B AG

Base Price: **\$454,500** 2,872 sqft 4 Beds 4 Baths



### DANSBY B

Base Price: **\$456,900** 2,628 sqft 4 Beds 3 Baths



### GORDON B AG

Base Price: **\$519,700** 3,507 sqft 5 Beds 4 Baths



### HARRIS B

Base Price: **\$474,900** 2,948 sqft 4 Beds 3 Baths



### MILLWOOD B

Base Price: **\$495,900** 3,463 sqft 5 Beds 4 Baths

#### SALES CENTER

15 Maple Lane Williamson, GA 30292  
Williamson, GA 30292

#### SALES CENTER ASSOCIATE

Sharon Ryals - 404.557.9061  
Emily Byrd - 678.201.8354

#### HOURS OF OPERATION

By Appointment Only

These prices do not reflect options or applicable lot premium.  
These prices and features are accurate as of 2025-07-03 07:00 and subject to change thereafter.



### FREEDOMBUILDERHOMES.COM

#### PALMER B

Base Price: **\$493,500**  
3,223 sqft 4 Beds 3.5 Baths



Base Price: **\$480,900**  
3,071 sqft 5 Beds 3.5 Baths

Marketed By Lindsey

Lindsey Marketing  
Group



Marketing Group Offered By: Freedom Builder Homes

Equal Housing Opportunity. All information is believed to be accurate, but is not guaranteed and is therefore subject to errors and changes without notice.

**AVAILABLE INVENTORY**

LOT NUMBER	FLOOR PLAN	SALES PRICE	APPROX. SQUARE FOOTAGE
83	ANDERSON B	\$638,280	3,497

\*Base prices do not reflect options or applicable lot premiums

These prices and features are accurate as of 2025-07-03 07:00 and subject to change thereafter.





## INCLUDED STANDARD *FEATURES PLATINUM*

### INTERIOR

- 9' Smooth Ceilings on Main Floor
- Square Ceilings
- Designer Lighting & Plumbing Fixtures
- Ceiling Fan in Family Room & Owner's Suite
- Ceiling Fan pre-wire in Secondary Bedrooms
- Choice of Designer Interior Doors
- Wrought Iron Pickets on Staircase\*
- 5" Newells at Bottom of 1st Floor Stairs\*
- Coffered Ceiling with Crown in Dining Room
- Chair Rail and Shadow Box Trim in Dining Room
- Nickel or Black Knobs & Hinges
- Engineered Hardwood or LVP in Foyer, Dining, Kitchen/Breakfast\*
- Tile Flooring or LVP in Laundry Room & all Bathrooms\*
- Granite in Master and Cultured Marble in Secondary Baths\*
- Elongated Commodes
- Direct Vent Fireplace with Mantle and Stone Surround
- Large Walk-In Closets
- Low Voltage with Structured Wiring Box
- Indoor Utility/Laundry Room with Electrical Connections & Vent

### KITCHEN

- Stainless Steel Undermount Sink
- Single Lever Faucet with Vegetable Sprayer
- Stainless Steel Appliances Includes- Electric Range, Microhood & Dishwasher
- Raised Panel or Shaker Cabinets with Soft Close and Decorative Cabinet Hardware\*
- Granite Countertops
- Decorative Tile Backsplash\*
- Chef's Pantry with Shelving Suite

### MASTER SUITE

- Double Custom Vanity
- 5' Tile Shower\*
- Designer Nickel or Black Frameless Shower Door
- Free Standing Tub & Roman Faucet\*
- Vaulted Ceilings\*
- Trey Ceilings\*
- Private Sitting Room\*

### EXTERIOR

- Fiber Cement Siding Craftsman and Traditional Style Homes with Stone Water Table on Front Only\*
- 4/1 Divided Light Window Grids on Front
- Architectural Roof Shingles
- Master Planned Landscape Packages
- 12X12 Uncovered Patio\*

- Lifetime Vinyl Soffit
- Shutters\*
- Pre-Finished Gutters with Splash Blocks
- Exterior Floodlights
- Front & Rear Electrical Outlets & Water Faucets
- Garage Door Opener with 2 Remotes

### ENERGY FEATURES

- Electric Dryer Hook-up
- Quick Recovery Hot Water Heater
- Energy Efficient Heat & Air Systems
- Insulated Low E Windows and Doors
- R-13 Exterior Walls - R-30 Flat Ceilings

### COMMUNITY EXCLUSIVE FEATURES

- Underground Utilities
- County Water & Septic Tanks
- FHA/VA Approved
- HOA & Protective Covenants
- Street Lights

\* Varies per Plan

**Photo shown is representation & may reflect options/upgrades not included in listed price**

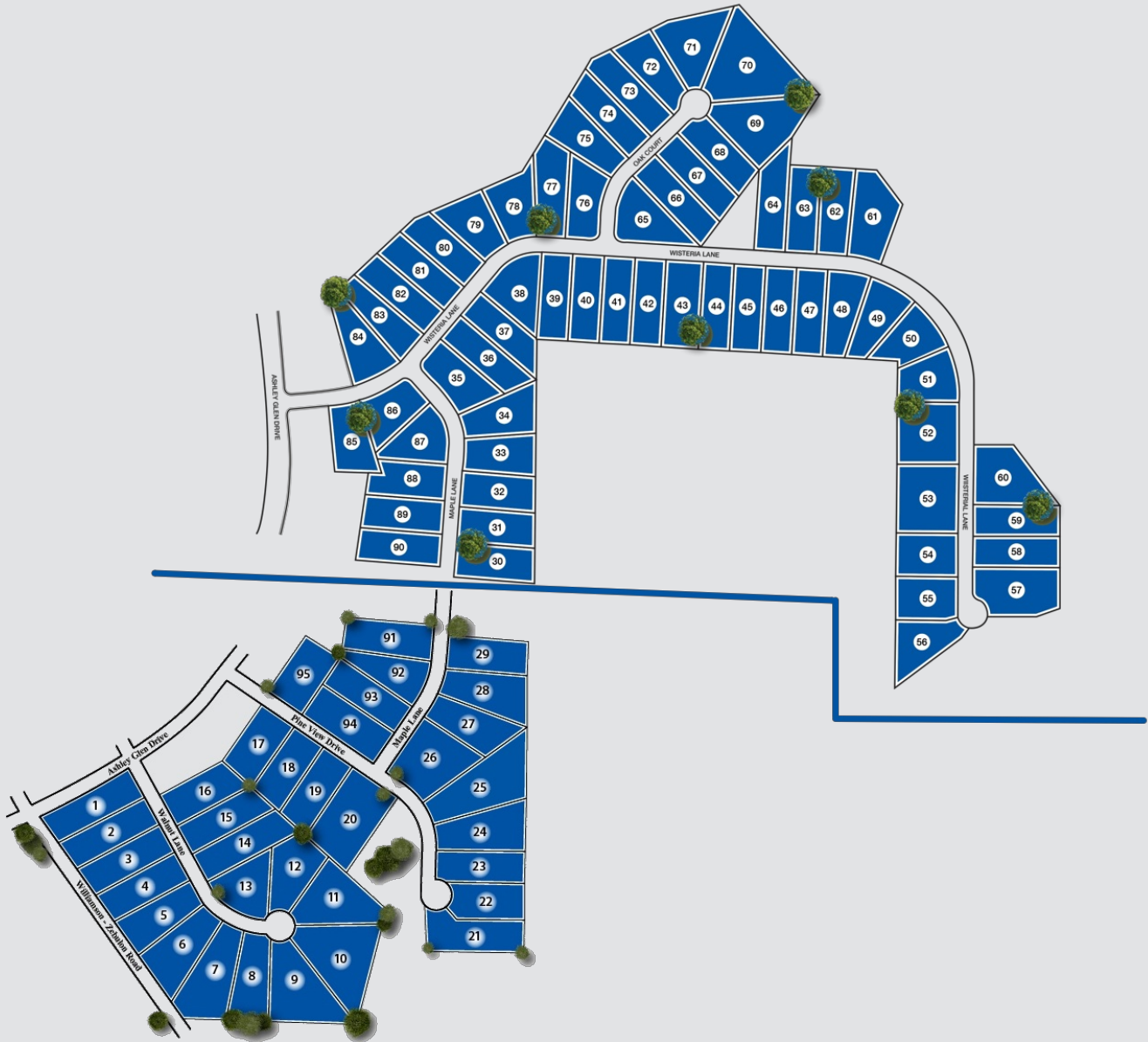
\*Base prices do not reflect options or applicable lot premiums

These prices and features are accurate as of 2025-07-03 07:00 and subject to change thereafter.





## COMMUNITY SITE MAP



Site plans shown are conceptual. Plans are in progress and subject to change without notice. Builder reserves the right of price, plan, and specification changes without notice or prior obligation. Information is believed accurate but is not warranted. All locations are approximate.

\*Base prices do not reflect options or applicable lot premiums

These prices and features are accurate as of 2025-07-03 07:00 and subject to change thereafter.



Marketed By: Lindsey Marketing Group Offered By: Freedom Builder Homes

**FREEDOMBUILDERHOMES.COM**

Lindsey Marketing  
Group 

Equal Housing Opportunity. All information is believed to be accurate, but is not guaranteed and is therefore subject to errors and changes without notice.